

OMPC Rabbit pAb

Catalog Number: bs-20213R

Target Protein: OMPC

Concentration: 1mg/ml

Form: Liquid

Host: Rabbit

Clonality: Polyclonal

Isotype: IgG

Applications: WB (1:500-2000)

Reactivity: Escherichia Coli

Predicted MW: 38 kDa

Subcellular: Cell membrane

Locations:

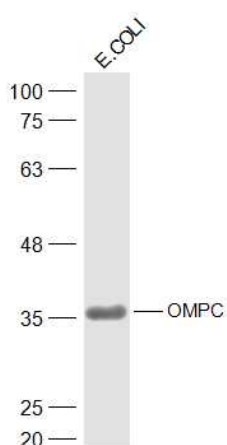
Source: KLH conjugated synthetic peptide derived from E.coli OMPC: 251-350/367.

Purification: affinity purified by Protein A

Storage: 0.01M TBS (pH7.4) with 1% BSA, 0.02% Proclin300 and 50% Glycerol.

Shipped at 4°C. Store at -20°C for one year. Avoid repeated freeze/thaw cycles.

VALIDATION IMAGES



Sample: E.coli Lysis solution Lysate at 30 ug Primary: Anti-OMPC (bs-20213R) at 1/500 dilution Secondary: IRDye800CW Goat Anti-Rabbit IgG at 1/20000 dilution Predicted band size: 38 kD Observed band size: 38 kD

PRODUCT SPECIFIC PUBLICATIONS

[IF=3.848] Yue Li. et al. Outer membrane vesicles derived from heatstroke-associated intestinal microbiota promote multiple organ

injury in mice. MICROB PATHOGENESIS. 2022 Jun;;105653 WB ; MOUSE . 35753600