

bsm-60327R**[Primary Antibody]**

BioSS
ANTIBODIES

www.bioss.com.cn

sales@bioss.com.cn

techsupport@bioss.com.cn

400-901-9800

VISTA Recombinant Rabbit mAb**— DATASHEET —****Host:** Rabbit**Isotype:** IgG**Clonality:** Recombinant**CloneNo.:** F11D4**Target:** VISTA**Purification:** affinity purified by Protein A**Concentration:** 1mg/ml

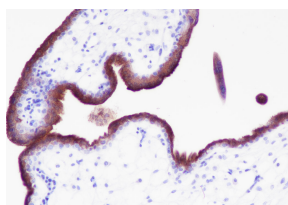
Storage: 0.01M TBS (pH7.4) with 1% BSA, 0.02% Proclin300 and 50% Glycerol.
Shipped at 4°C. Store at -20°C for one year. Avoid repeated freeze/thaw cycles.

Background: Platelet receptor Gl24, also known as SISP1 or PP2135, is a 311 amino acid single-pass type I membrane protein that contains one Ig-like (immunoglobulin-like) domain. Gl24 is thought to contribute to tumor-invasive growth in the collagen matrix and is encoded by a gene that maps to human chromosome 10q22.1. Chromosome 10 contains over 800 genes, 135 million nucleotides and comprises nearly 4.5% of the human genome. PTEN is an important tumor suppressor gene located on chromosome 10 and, when defective, causes a genetic predisposition to cancer development known as Cowden syndrome. The chromosome 10 encoded gene ERCC6 is important for DNA repair and is linked to Cockayne syndrome which is characterized by extreme photosensitivity and premature aging. Tetrahydrobiopterin deficiency and a number of syndromes involving defective skull and facial bone fusion are also linked to chromosome 10. As with most trisomies, trisomy 10 is rare and is deleterious.

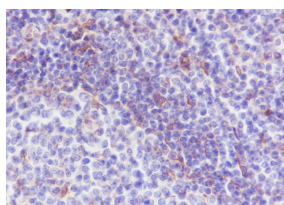
Applications: IHC-P (1:100-500)
IHC-F (1:100-500)
IF

Reactivity: Human

Subcellular Location: Cell membrane

— VALIDATION IMAGES —

Tissue: Human placenta Section type: Formalin fixed & Paraffin -embedded section Retrieval method: High temperature and high pressure Retrieval buffer: Tris/EDTA buffer, pH 9.0 Primary ab dilution: 1:1000 Primary ab incubation condition: 1 hour at room temperature Counter stain: Hematoxylin Comment: Color brown is the positive signal for bsm-60327R



Tissue: Human tonsil Section type: Formalin fixed & Paraffin -embedded section Retrieval method: High temperature and high pressure Retrieval buffer: Tris/EDTA buffer, pH 9.0 Primary ab dilution: 1:100 Primary incubation condition: 1 hour at room temperature Counter stain: Hematoxylin Comment: Color brown is the positive signal for bsm-60327R