

bs-2040R**[Primary Antibody]**

Bioss
ANTIBODIES

www.bioss.com.cn

sales@bioss.com.cn

techsupport@bioss.com.cn

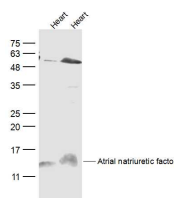
400-901-9800

Atrial natriuretic factor Rabbit pAb

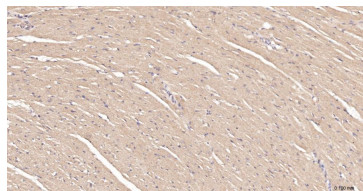
DATASHEET

Host: Rabbit	Isotype: IgG	Applications: WB (1:500-2000) IHC-P (1:100-500) IHC-F (1:100-500) IF (1:100-500) Reactivity: Human, Mouse, Rat (predicted: Rabbit, Pig, Sheep, Cow, Dog, GuineaPig, Horse) Predicted MW.: 3/17 kDa Subcellular Location: Secreted
Clonality: Polyclonal		
GeneID: 4878	SWISS: P01160	
Target: Atrial natriuretic factor		
Immunogen: KLH conjugated synthetic peptide derived from human ANP: 124-151/153.		
Purification: affinity purified by Protein A		
Concentration: 1mg/ml		
Storage: 0.01M TBS (pH7.4) with 1% BSA, 0.02% Proclin300 and 50% Glycerol. Shipped at 4°C. Store at -20°C for one year. Avoid repeated freeze/thaw cycles.		
Background: The protein encoded by this gene belongs to the natriuretic peptide family. Natriuretic peptides are implicated in the control of extracellular fluid volume and electrolyte homeostasis. This protein is synthesized as a large precursor (containing a signal peptide), which is processed to release a peptide from the N-terminus with similarity to vasoactive peptide, cardiodilatin, and another peptide from the C-terminus with natriuretic-diuretic activity. Mutations in this gene have been associated with atrial fibrillation familial type 6. [provided by RefSeq, Sep 2009]..		

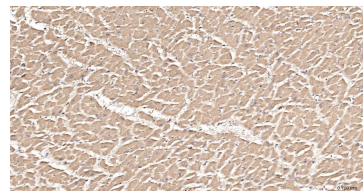
VALIDATION IMAGES



Sample: Heart (Mouse) Lysate at 40 ug Heart (Rat) Lysate at 40 ug Primary: Anti-Atrial natriuretic factor (bs-2040R) at 1/300 dilution Secondary: IRDye800CW Goat Anti-Rabbit IgG at 1/20000 dilution Predicted band size: 3/17 kD Observed band size: 15 kD



Paraformaldehyde-fixed, paraffin embedded Mouse Heart; Antigen retrieval by boiling in sodium citrate buffer (pH6.0) for 15 min; The section was incubated with Atrial natriuretic factor Polyclonal Antibody, Unconjugated (bs-2040R) at 1:200 overnight at 4°C, followed by conjugation to the bs-0295G-HRP and DAB (C-0010) staining.



Paraformaldehyde-fixed, paraffin embedded Human Heart; Antigen retrieval by boiling in sodium citrate buffer (pH6.0) for 15 min; The section was incubated with Atrial natriuretic factor Polyclonal Antibody, Unconjugated (bs-2040R) at 1:200 overnight at 4°C, followed by conjugation to the bs-0295G-HRP and DAB (C-0010) staining.

SELECTED CITATIONS

- **[IF=4.432]** Ruomiao Li. et al. Protective effects of dioscin against isoproterenol-induced cardiac hypertrophy via adjusting PKCε/ERK-mediated oxidative stress. Eur J Pharmacol. 2021 Sep;907:174277 WB ;Rat. 34171391
- **[IF=1.7]** Straub, Rainer H., et al. "Increased extracellular water measured by bioimpedance and by increased serum levels of atrial natriuretic peptide in RA patients—signs of volume overload." Clinical Rheumatology (2016): 1-11 IHC ;Human. 27112146
- **[IF=0]** Malinowski, Nadezhda. Erhöhtes extrazelluläres Wasser gemessen durch Bioimpedanz und erhöhter Serumspiegel von atrialem natriuretischen Peptid bei rheumatoider Arthritis—Anzeichen von Volumenüberlastung. Diss. 2015. IHC ;Human. KlinikumderUniversitätRegensburg

Important Note: This product as supplied is intended for research use only, not for use in human, therapeutic or diagnostic applications.