

## SLC25A11 Rabbit pAb

Catalog Number: bs-8703R

Target Protein: SLC25A11

Concentration: 1mg/ml

Form: Liquid

Host: Rabbit

Clonality: Polyclonal

Isotype: IgG

Applications: WB (1:500-2000), Flow-Cyt (1ug/Test)

Reactivity: Human, Mouse (predicted:Rat, Rabbit, Sheep, Cow, GuineaPig)

Predicted MW: 34 kDa

Subcellular Cell membrane ,Cytoplasm

Locations:

Entrez Gene: 8402

Swiss Prot: Q02978

Source: KLH conjugated synthetic peptide derived from human SLC25A15: 101-200/314.

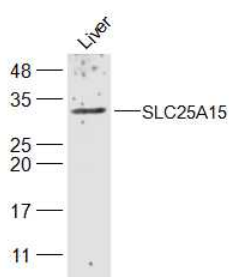
Purification: affinity purified by Protein A

Storage: Preservative: 0.02% Proclin300, Constituents: 1% BSA, 0.01M PBS, pH7.4.

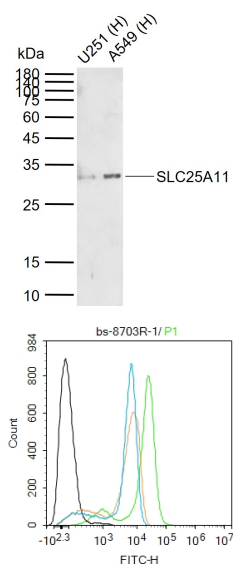
Shipped at 4°C. Store at -20°C for one year. Avoid repeated freeze/thaw cycles.

**Background:** SLC25A11 catalyzes the transport of 2-oxoglutarate across the inner mitochondrial membrane in an electroneutral exchange for malate or other dicarboxylic acids, and plays an important role in several metabolic processes, including the malate-aspartate shuttle, the oxoglutarate/isocitrate shuttle, in gluconeogenesis from lactate, and in nitrogen metabolism.

### VALIDATION IMAGES



Sample: Liver (Mouse) Lysate at 40 ug Primary: Anti-SLC25A15 (bs-8703R) at 1/300 dilution Secondary: IRDye800CW Goat Anti-Rabbit IgG at 1/20000 dilution Predicted band size: 34 kD Observed band size: 34 kD



Sample: Lane 1: Human U251 cell lysates Lane 2: Human A549 cell lysates Primary: Anti-SLC25A11 (bs-8703R) at 1/1000 dilution Secondary: IRDye800CW Goat Anti-Rabbit IgG at 1/20000 dilution Predicted band size: 34 kDa Observed band size: 32 kDa

Blank control: THP-1. Primary Antibody (green line): Rabbit Anti-SLC25A15 antibody (bs-8703R) Dilution:  $1\mu\text{g}/10^6$  cells; Isotype Control Antibody (orange line): Rabbit IgG . Secondary Antibody : Goat anti-rabbit IgG-FITC Dilution:  $1\mu\text{g}/\text{test}$ . Protocol The cells were fixed with 4% PFA (10min at room temperature) and then permeabilized with 0.1% PBST methanol for 20 min at room temperature. The cells were then incubated in 5% BSA to block non-specific protein-protein interactions for 30 min at room temperature. Cells stained with Primary Antibody for 30 min at room temperature. The secondary antibody used for 40 min at room temperature. Acquisition of 20,000 events was performed.