

bs-21208R

[Primary Antibody]

SLC22A15 Rabbit pAb

Bioss
ANTIBODIES

www.bioss.com.cn

sales@bioss.com.cn

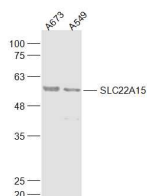
techsupport@bioss.com.cn

400-901-9800

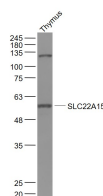
— DATASHEET —

Host: Rabbit	Isotype: IgG	Applications: WB (1:500-2000)
Clonality: Polyclonal		Reactivity: Human, Mouse (predicted: Rat)
GeneID: 55356	SWISS: Q8IZD6	
Target: SLC22A15		Predicted MW.: 61 kDa
Immunogen: KLH conjugated synthetic peptide derived from human SLC22A15: 301-400/547.		Subcellular Location: Cell membrane
Purification: affinity purified by Protein A		
Concentration: 1mg/ml		
Storage: Preservative: 0.02% Proclin300, Constituents: 1% BSA, 0.01M PBS, pH7.4. Shipped at 4°C. Store at -20°C for one year. Avoid repeated freeze/thaw cycles.		
Background: Organic ion transporters, such as SLC22A15, transport various medically and physiologically important compounds, including pharmaceuticals, toxins, hormones, neurotransmitters, and cellular metabolites. These transporters are also referred to as amphiphilic solute facilitators (ASFs).[supplied by OMIM, Apr 2004]		

— VALIDATION IMAGES —



Sample: A673(Human) Cell Lysate at 30 ug
A549(Human) Cell Lysate at 30 ug Primary: Anti-SLC22A15 (bs-21208R) at 1/1000 dilution
Secondary: IRDye800CW Goat Anti-Rabbit IgG at 1/20000 dilution Predicted band size: 61 kD
Observed band size: 61 kD



Sample: Thymus (Mouse) Lysate at 40 ug
Primary: Anti- SLC22A15 (bs-21208R) at 1/1000 dilution Secondary: IRDye800CW Goat Anti-Rabbit IgG at 1/20000 dilution Predicted band size: 61 kD Observed band size: 60 kD