

bs-21206R**[Primary Antibody]****SLC22A13 Rabbit pAb****BioSS**
ANTIBODIES

www.bioss.com.cn

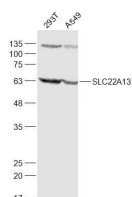
sales@bioss.com.cn

techsupport@bioss.com.cn

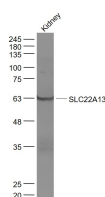
400-901-9800

— DATASHEET —

Host: Rabbit	Isotype: IgG	Applications: WB (1:500-2000)
Clonality: Polyclonal		Reactivity: Human, Mouse
GeneID: 9390	SWISS: Q9Y226	
Target: SLC22A13		
Immunogen: KLH conjugated synthetic peptide derived from human SLC22A13: 81-180/551. < Extracellular >		Predicted MW.: 61 kDa
Purification: affinity purified by Protein A		Subcellular Location: Cell membrane
Concentration: 1mg/ml		
Storage: Preservative: 0.02% Proclin300, Constituents: 1% BSA, 0.01M PBS, pH7.4. Shipped at 4°C. Store at -20°C for one year. Avoid repeated freeze/thaw cycles.		
Background: This gene encodes a member of the organic-cation transporter family. It is located in a gene cluster with another member of the family, organic cation transporter like 4. The encoded protein is a transmembrane protein involved in the transport of small molecules. This protein can function to mediate urate uptake and is a high affinity nicotinate exchanger in the kidneys and the intestine. [provided by RefSeq, Sep 2008]		

— VALIDATION IMAGES —

Sample: 293T(Human) Cell Lysate at 30 ug
A549(Human) Cell Lysate at 30 ug Primary: Anti-SLC22A13 (bs-21206R) at 1/1000 dilution
Secondary: IRDye800CW Goat Anti-Rabbit IgG at 1/20000 dilution Predicted band size: 61 kD
Observed band size: 63 kD



Sample: Kidney(Mouse) Lysate at 40 ug Primary: Anti- SLC22A13 (bs-21206R) at 1/1000 dilution
Secondary: IRDye800CW Goat Anti-Rabbit IgG at 1/20000 dilution Predicted band size: 61 kD
Observed band size: 63 kD