

VGLUT3/SLC17A8 Rabbit pAb

Catalog Number: bs-8701R

Target Protein: VGLUT3/SLC17A8

Concentration: 1mg/ml

Form: Liquid

Host: Rabbit

Clonality: Polyclonal

Isotype: IgG

Applications: IHC-P (1:100-500), IHC-F (1:100-500), IF (1:100-500)

Reactivity: Mouse (predicted:Human, Rat, Rabbit, Sheep, Cow, Dog, Horse)

Predicted MW: 65 kDa

Entrez Gene: 246213

Swiss Prot: Q8NDX2

Source: KLH conjugated synthetic peptide derived from human VGLUT3/SLC17A8: 1-100/589.

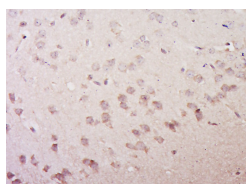
Purification: affinity purified by Protein A

Storage: Preservative: 0.02% Proclin300, Constituents: 1% BSA, 0.01M PBS, pH7.4.

Shipped at 4°C. Store at -20°C for one year. Avoid repeated freeze/thaw cycles.

Background: This gene encodes a vesicular glutamate transporter. The encoded protein transports the neurotransmitter glutamate into synaptic vesicles before it is released into the synaptic cleft. Mutations in this gene are the cause of autosomal-dominant nonsyndromic type 25 deafness. Alternate splicing results in multiple transcript variants.[provided by RefSeq, May 2010]

VALIDATION IMAGES



Paraformaldehyde-fixed, paraffin embedded (Mouse brain); Antigen retrieval by boiling in sodium citrate buffer (pH6.0) for 15min; Block endogenous peroxidase by 3% hydrogen peroxide for 20 minutes; Blocking buffer (normal goat serum) at 37°C for 30min; Antibody incubation with (VGLU3) Polyclonal Antibody, Unconjugated (bs-8701R) at 1:400 overnight at 4°C, followed by operating according to SP Kit(Rabbit (sp-0023) instructions and DAB staining.