

n-Myc Rabbit pAb

Catalog Number: bs-22205R

Target Protein: n-Myc

Concentration: 1mg/ml

Form: Liquid

Host: Rabbit

Clonality: Polyclonal

Isotype: IgG

Applications: WB (1:500-2000)

Reactivity: Human, Mouse (predicted:Rat)

Predicted MW: 49 kDa

Subcellular Nucleus

Locations:

Entrez Gene: 4613

Swiss Prot: P04198

Source: KLH conjugated synthetic peptide derived from human n-Myc : 1-100/464.

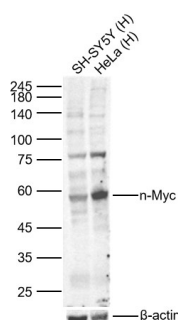
Purification: affinity purified by Protein A

Storage: 0.01M TBS (pH7.4) with 1% BSA, 0.02% Proclin300 and 50% Glycerol.

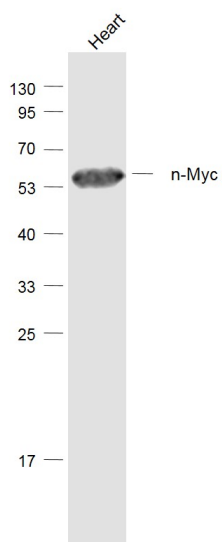
Shipped at 4°C. Store at -20°C for one year. Avoid repeated freeze/thaw cycles.

Background: This gene is a member of the MYC family and encodes a protein with a basic helix-loop-helix (bHLH) domain. This protein is located in the nucleus and must dimerize with another bHLH protein in order to bind DNA. Amplification of this gene is associated with a variety of tumors, most notably neuroblastomas. [provided by RefSeq, Jul 2008].

VALIDATION IMAGES



Sample: Lane 1: Human SH-SY5Y cell Lysates Lane 2: Human Hela cell Lysates Primary: Anti-n-Myc (bs-22205R) at 1/1000 dilution Secondary: IRDye800CW Goat Anti-Rabbit IgG at 1/20000 dilution Predicted band size: 49kDa Observed band size: 60kDa



Sample: Heart (Mouse) Lysate at 40 ug Primary: Anti-n-Myc (bs-22205R) at 1/1000 dilution Secondary: IRDye800CW Goat Anti-Rabbit IgG at 1/20000 dilution Predicted band size: 49 kD Observed band size: 49 kD