

bs-12118R**[Primary Antibody]****SLC35C2 Rabbit pAb****BioSS**
ANTIBODIES

www.bioss.com.cn

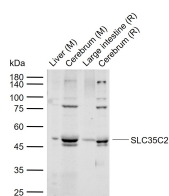
sales@bioss.com.cn

techsupport@bioss.com.cn

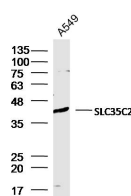
400-901-9800

— DATASHEET —

Host: Rabbit	Isotype: IgG	Applications: WB (1:500-2000)
Clonality: Polyclonal		Reactivity: Human, Mouse, Rat (predicted: Rabbit, Pig, Sheep, Cow, Chicken, Horse)
GeneID: 51006	SWISS: Q9NQQ7	Predicted MW.: 40 kDa
Target: SLC35C2		Subcellular Location: Cell membrane
Immunogen: KLH conjugated synthetic peptide derived from human SLC35C2: 81-200/365.		
Purification: affinity purified by Protein A		
Concentration: 1mg/ml		
Storage: 0.01M TBS (pH7.4) with 1% BSA, 0.02% Proclin300 and 50% Glycerol. Shipped at 4°C. Store at -20°C for one year. Avoid repeated freeze/thaw cycles.		
Background: SLC35C2 (solute carrier family 35, member C2), also known as C20orf5, OVCOV1 or CGI-15, is a 365 amino acid multi-pass membrane protein that belongs to the TPT transporter family and exists as multiple alternatively spliced isoforms. Expressed ubiquitously and functionally induced in hypoxic trophoblast cells, SLC35C2 plays a role in the cellular response to tissue hypoxia and is thought to be involved in the pathogenesis of ovarian cancer. The gene encoding SLC35C2 maps to human chromosome 20, which houses over 600 genes some of which are associated with Creutzfeldt-Jakob disease, amyotrophic lateral sclerosis, spinal muscular atrophy, ring chromosome 20 epilepsy syndrome and Alagille syndrome. Additionally, chromosome 20 contains a region with numerous genes which are thought important for seminal production and may be potential targets for male contraception.		

— VALIDATION IMAGES —

Sample: Lane 1: Mouse Liver tissue lysates Lane 2: Mouse Cerebrum tissue lysates Lane 3: Rat Large intestine tissue lysates Lane 4: Rat Cerebrum tissue lysates Primary: Anti-SLC35C2 (bs-12118R) at 1/1000 dilution Secondary: IRDye800CW Goat Anti-Rabbit IgG at 1/20000 dilution Predicted band size: 40 kDa Observed band size: 48 kDa



Sample: A549 Cell (Human) Lysate at 30 ug Primary: Anti-SLC35C2 (bs-12118R) at 1/300 dilution Secondary: IRDye800CW Goat Anti-Rabbit IgG at 1/20000 dilution Predicted band size: 40 kD Observed band size: 40 kD