

bs-21868R**[Primary Antibody]****PGK1 Rabbit pAb****BioSS**
ANTIBODIES

www.bioss.com.cn

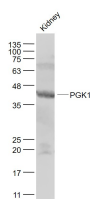
sales@bioss.com.cn

techsupport@bioss.com.cn

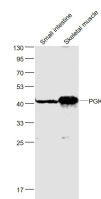
400-901-9800

— DATASHEET —

Host: Rabbit	Isotype: IgG	Applications: WB (1:500-2000)
Clonality: Polyclonal		Reactivity: Mouse (predicted: Human, Rat, Sheep, Cow, Horse)
GeneID: 5230	SWISS: P00558	
Target: PGK1		Predicted MW.: 44 kDa
Immunogen: KLH conjugated synthetic peptide derived from human PGK1: 241-340/417.		Subcellular Location: Cytoplasm
Purification: affinity purified by Protein A		
Concentration: 1mg/ml		
Storage: 0.01M TBS (pH7.4) with 1% BSA, 0.02% Proclin300 and 50% Glycerol. Shipped at 4°C. Store at -20°C for one year. Avoid repeated freeze/thaw cycles.		
Background: The protein encoded by this gene is a glycolytic enzyme that catalyzes the conversion of 1,3-diphosphoglycerate to 3-phosphoglycerate. The encoded protein may also act as a cofactor for polymerase alpha. This gene lies on the X-chromosome, while a related pseudogene also has been found on the X-chromosome and another on chromosome 19. [provided by RefSeq]		

— VALIDATION IMAGES —

Sample: Kidney (Mouse) Lysate at 40 ug Primary:
Anti- PGK1 (bs-21868R) at 1/1000 dilution
Secondary: IRDye800CW Goat Anti-Rabbit IgG at
1/20000 dilution Predicted band size: 44 kD
Observed band size: 44 kD



Sample: Small intestine (Mouse) Lysate at 40 ug
Skeletal muscle (Mouse) Lysate at 40 ug Primary:
Anti- PGK1 (bs-21868R) at 1/1000 dilution
Secondary: IRDye800CW Goat Anti-Rabbit IgG at
1/20000 dilution Predicted band size: 44 kD
Observed band size: 42 kD