

bs-16492R

[Primary Antibody]

ZNF766 Rabbit pAb

Bioss
ANTIBODIES

www.bioss.com.cn

sales@bioss.com.cn

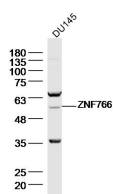
techsupport@bioss.com.cn

400-901-9800

— DATASHEET —

Host: Rabbit	Isotype: IgG	Applications: WB (1:500-2000)
Clonality: Polyclonal		Reactivity: Human
GeneID: 90321	SWISS: Q5HY98	
Target: ZNF766		
Immunogen: KLH conjugated synthetic peptide derived from human ZNF766: 51-150/468.		Predicted MW.: 54 kDa
Purification: affinity purified by Protein A		Subcellular Location: Nucleus
Concentration: 1mg/ml		
Storage: 0.01M TBS (pH7.4) with 1% BSA, 0.02% Proclin300 and 50% Glycerol. Shipped at 4°C. Store at -20°C for one year. Avoid repeated freeze/thaw cycles.		
Background: ZNF766 belongs to the krueppel C2H2 type zinc finger protein family and may be involved in transcriptional regulation.		

— VALIDATION IMAGES —



Sample: DU145 Cell (Human) Lysate at 40 ug
Primary: Anti-ZNF766 (bs-16492R) at 1/300 dilution
Secondary: IRDye800CW Goat Anti-Rabbit IgG at 1/20000 dilution
Predicted band size: 54 kD
Observed band size: 54 kD