

bs-4009R**[Primary Antibody]****ATG4D Rabbit pAb****BioSS**
ANTIBODIES

www.bioss.com.cn

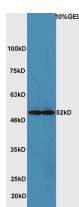
sales@bioss.com.cn

techsupport@bioss.com.cn

400-901-9800

— DATASHEET —

Host: Rabbit	Isotype: IgG	Applications: WB (1:500-2000)
Clonality: Polyclonal		
GeneID: 84971	SWISS: Q86TL0	
Target: ATG4D		
Immunogen: KLH conjugated synthetic peptide derived from human ATG4D: 381-474/474.		
Purification: affinity purified by Protein A		Reactivity: Mouse (predicted: Human, Rat, Pig, Cow, Dog)
Concentration: 1mg/ml		Predicted MW.: 52 kDa
Storage: 0.01M TBS (pH7.4) with 1% BSA, 0.02% Proclin300 and 50% Glycerol. Shipped at 4°C. Store at -20°C for one year. Avoid repeated freeze/thaw cycles.		Subcellular Location: Cytoplasm
Background: Autophagy is the process by which endogenous proteins and damaged organelles are destroyed intracellularly. Autophagy is postulated to be essential for cell homeostasis and cell remodeling during differentiation, metamorphosis, non-apoptotic cell death, and aging. Reduced levels of autophagy have been described in some malignant tumors, and a role for autophagy in controlling the unregulated cell growth linked to cancer has been proposed. This gene belongs to the autophagy-related protein 4 (Atg4) family of C54 endopeptidases. Members of this family encode proteins that play a role in the biogenesis of autophagosomes, which sequester the cytosol and organelles for degradation by lysosomes. Alternative splicing results in multiple transcript variants. [provided by RefSeq, Jul 2013]		

— VALIDATION IMAGES —

Sample: Heart (Mouse) Lysate at 40 ug Brain
(Mouse) Lysate at 40 ug Primary: Anti- ATG4D
(bs-4009R) at 1/300 dilution Secondary: HRP
conjugated Goat-Anti-rabbit IgG (bs-0295G-HRP)
at 1/5000 dilution Predicted band size: 52 kD
Observed band size: 52 kD