

**bs-7726R****[ Primary Antibody ]****phospho-REC8 (Ser251) Rabbit pAb****BioSS**  
**ANTIBODIES**

www.bioss.com.cn

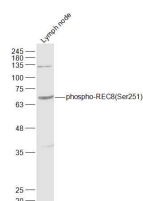
sales@bioss.com.cn

techsupport@bioss.com.cn

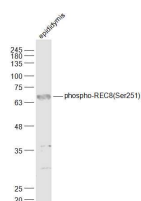
400-901-9800

**— DATASHEET —**

<b>Host:</b> Rabbit	<b>Isotype:</b> IgG	<b>Applications:</b> WB (1:500-2000)
<b>Clonality:</b> Polyclonal		<b>Reactivity:</b> Mouse
<b>GeneID:</b> 56739	<b>SWISS:</b> Q8C5S7	
<b>Target:</b> REC8 (Ser251)		
<b>Immunogen:</b> KLH conjugated synthesised phosphopeptide derived from mouse REC8 around the phosphorylation site of Ser251: RA(p-S)LP.		<b>Predicted MW.:</b> 67 kDa
<b>Purification:</b> affinity purified by Protein A		<b>Subcellular Location:</b> Nucleus
<b>Concentration:</b> 1mg/ml		
<b>Storage:</b> 0.01M TBS (pH7.4) with 1% BSA, 0.02% Proclin300 and 50% Glycerol. Shipped at 4°C. Store at -20°C for one year. Avoid repeated freeze/thaw cycles.		
<b>Background:</b> Required during meiosis for separation of sister chromatids and homologous chromosomes. Proteolytic cleavage of REC8 on chromosome arms by separin during anaphase I allows for homologous chromosome separation in meiosis I and cleavage of REC8 on centromeres during anaphase II allows for sister chromatid separation in meiosis II.		

**— VALIDATION IMAGES —**

Sample: Lymph node (Mouse) Lysate at 40 ug  
 Primary: Anti-phospho-REC8(Ser251) (bs-7726R)  
 at 1/1000 dilution Secondary: IRDye800CW Goat  
 Anti-Rabbit IgG at 1/20000 dilution Predicted  
 band size: 67 kD Observed band size: 67 kD



Sample: Epididymis (Mouse) Lysate at 40 ug  
 Primary: Anti-phospho-REC8(Ser251) (bs-7726R)  
 at 1/1000 dilution Secondary: IRDye800CW Goat  
 Anti-Rabbit IgG at 1/20000 dilution Predicted  
 band size: 67 kD Observed band size: 67 kD