

bs-5247R**[Primary Antibody]****phospho-CDK1 (Ser39) Rabbit pAb****BioSS**
ANTIBODIES

www.bioss.com.cn

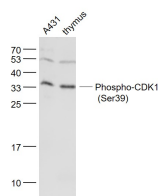
sales@bioss.com.cn

techsupport@bioss.com.cn

400-901-9800

— DATASHEET —

Host: Rabbit	Isotype: IgG	Applications: WB (1:500-2000)
Clonality: Polyclonal		Reactivity: Human, Mouse (predicted: Rat, Rabbit, Pig, Sheep, Cow, Chicken, Dog, Horse)
GeneID: 983	SWISS: P06493	Predicted MW.: 34 kDa
Target: CDK1 (Ser39)		Subcellular Location: Cytoplasm ,Nucleus
Immunogen: KLH conjugated Synthesised phosphopeptide derived from human cdc2 around the phosphorylation site of Ser39: LE(p-S)EE.		
Purification: affinity purified by Protein A		
Concentration: 1mg/ml		
Storage: 0.01M TBS (pH7.4) with 1% BSA, 0.02% Proclin300 and 50% Glycerol. Shipped at 4°C. Store at -20°C for one year. Avoid repeated freeze/thaw cycles.		
Background: The protein encoded by this gene is a member of the Ser/Thr protein kinase family. This protein is a catalytic subunit of the highly conserved protein kinase complex known as M-phase promoting factor (MPF), which is essential for G1/S and G2/M phase transitions of eukaryotic cell cycle. Mitotic cyclins stably associate with this protein and function as regulatory subunits. The kinase activity of this protein is controlled by cyclin accumulation and destruction through the cell cycle. The phosphorylation and dephosphorylation of this protein also play important regulatory roles in cell cycle control. Alternatively spliced transcript variants encoding different isoforms have been found for this gene. [provided by RefSeq, Mar 2009]		

— VALIDATION IMAGES —

Sample: A431(Human) Cell Lysate at 30 ug
Thymus (Mouse) Lysate at 40 ug Primary: Anti-
Phospho-CDK1 (Ser39) (bs-5247R) at 1/1000
dilution Secondary: IRDye800CW Goat Anti-
Rabbit IgG at 1/20000 dilution Predicted band
size: 34 kD Observed band size: 34 kD