

**bs-5246R****[ Primary Antibody ]****phospho-Cdc6 (Ser54) Rabbit pAb****BioSS**  
**ANTIBODIES**

www.bioss.com.cn

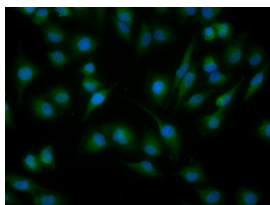
sales@bioss.com.cn

techsupport@bioss.com.cn

400-901-9800

**— DATASHEET —**

<b>Host:</b> Rabbit	<b>Isotype:</b> IgG	<b>Applications:</b> ICC/IF (1:100)
<b>Clonality:</b> Polyclonal		<b>Reactivity:</b> Human (predicted: Mouse, Rat, Rabbit, Pig, Sheep, Dog, Horse)
<b>GeneID:</b> 990	<b>SWISS:</b> Q99741	<b>Predicted MW.:</b> 63 kDa
<b>Target:</b> phospho-Cdc6 (Ser54)		<b>Subcellular Location:</b> Cytoplasm ,Nucleus
<b>Immunogen:</b> KLH conjugated Synthesised phosphopeptide derived from human Cdc6 around the phosphorylation site of Ser54: PL(p-S)PR.		
<b>Purification:</b> affinity purified by Protein A		
<b>Concentration:</b> 1mg/ml		
<b>Storage:</b> 0.01M TBS (pH7.4) with 1% BSA, 0.02% Proclin300 and 50% Glycerol. Shipped at 4°C. Store at -20°C for one year. Avoid repeated freeze/thaw cycles.		
<b>Background:</b> Cell cycle events are regulated by the sequential activation and deactivation of cyclin depended kinase (Cdks) and by the proteolysis of cyclins. The cell division cycle (Cdc) genes are required at various points in the cell cycle. Cdc6 is the human homolog of Saccharomyces cerevisiae Cdc6, which is involved in the initiation of DNA replication. Cdc6 is essential for assembling the pre-replicative complex that forms at origins of DNA replication in the G1 phase of the cell cycle in budding yeast (S. cerevisiae). Cdc6 is also involved in checkpoint controls that ensure that DNA replication is completed before initiation of mitosis.		

**— VALIDATION IMAGES —**

HUVEC cell; 4% Paraformaldehyde-fixed; Triton X-100 at room temperature for 20 min; Blocking buffer (normal goat serum, C-0005) at 37°C for 20 min; Antibody incubation with (phospho-Cdc6 (Ser54)) polyclonal Antibody, Unconjugated (bs-5246R) 1:100, 90 minutes at 37°C; followed by a conjugated Goat Anti-Rabbit IgG antibody at 37°C for 90 minutes, DAPI (blue, C02-04002) was used to stain the cell nuclei.