

NALP3/CIAS1 Rabbit pAb

Catalog Number: bs-24565R

Target Protein: NALP3/CIAS1

Concentration: 1mg/ml

Form: Lyophilized or Liquid

Host: Rabbit

Clonality: Polyclonal

Isotype: IgG

Applications: WB (1:500-2000), ELISA (1:5000-10000)

Reactivity: Human, Mouse (predicted:Rat)

Predicted MW: 114 kDa

Entrez Gene: 114548

Swiss Prot: Q96P20

Source: KLH conjugated synthetic peptide derived from human NALP3/CIAS1: 541-640/1036.

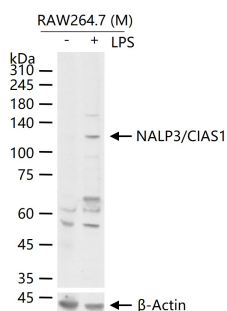
Purification: affinity purified by Protein A

Storage: 0.01M TBS (pH7.4) with 1% BSA, 0.02% Proclin300 and 50% Glycerol.

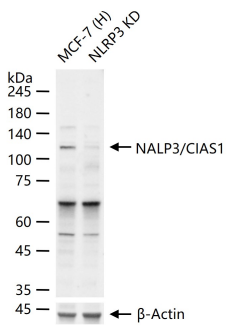
Shipped at 4°C. Store at -20°C for one year. Avoid repeated freeze/thaw cycles.

Background: May function as an inducer of apoptosis. Interacts selectively with ASC and this complex may function as an upstream activator of NF-kappa-B signaling. Inhibits TNF-alpha induced activation and nuclear translocation of RELA/NF-KB p65. Also inhibits transcriptional activity of RELA. Activates caspase-1 in response to a number of triggers including bacterial or viral infection which leads to processing and release of IL1B and IL18. Subcellular Location : Cytoplasm.

VALIDATION IMAGES



RAW264.7 (M) cells were treated with or without LPS (10 µg/ml) for 8 h, 25 µg total protein per lane of cell lysates (see on figure) probed with NALP3/CIAS1 polyclonal antibody, unconjugated (bs-24565R) at 1:1000 dilution and 4°C overnight incubation. Followed by conjugated secondary antibody incubation at r.t. for 60 min.



25 ug total protein per lane of various lysates (see on figure) probed with NALP3/CIAS1 polyclonal antibody, unconjugated (bs-24565R) at 1:1000 dilution and 4°C overnight incubation. Followed by conjugated secondary antibody incubation at r.t. for 60 min.