

bs-24563R**[Primary Antibody]****BioSS**
ANTIBODIES

www.bioss.com.cn

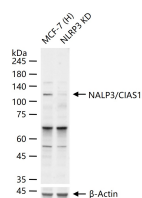
sales@bioss.com.cn

techsupport@bioss.com.cn

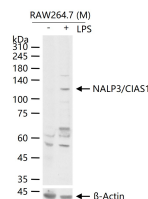
400-901-9800

NALP3/CIAS1 Rabbit pAb**DATASHEET**

Host: Rabbit	Isotype: IgG	Applications: WB (1:500-2000)
Clonality: Polyclonal		Reactivity: Human, Mouse (predicted: Rat)
GeneID: 216799	SWISS: Q8R4B8	
Target: NALP3/CIAS1		Predicted MW.: 114 kDa
Immunogen: KLH conjugated synthetic peptide derived from mouse NALP3/CIAS1: 921-1020/1033.		Subcellular Location: Cytoplasm
Purification: affinity purified by Protein A		
Concentration: 1mg/ml		
Storage: 0.01M TBS (pH7.4) with 1% BSA, 0.02% Proclin300 and 50% Glycerol. Shipped at 4°C. Store at -20°C for one year. Avoid repeated freeze/thaw cycles.		
Background: May function as an inducer of apoptosis. Interacts selectively with ASC and this complex may function as an upstream activator of NF-kappa-B signaling. Inhibits TNF-alpha induced activation and nuclear translocation of RELA/NF-KB p65. Also inhibits transcriptional activity of RELA. Activates caspase-1 in response to a number of triggers including bacterial or viral infection which leads to processing and release of IL1B and IL18. Subcellular Location : Cytoplasm.		

VALIDATION IMAGES

25 ug total protein per lane of various lysates (see on figure) probed with NALP3/CIAS1 polyclonal antibody, unconjugated (bs-24563R) at 1:1000 dilution and 4°C overnight incubation. Followed by conjugated secondary antibody incubation at r.t. for 60 min.



RAW264.7 (M) cells were treated with or without LPS (10 µg/ml) for 8 h, 25 µg total protein per lane of cell lysates (see on figure) probed with NALP3/CIAS1 polyclonal antibody, unconjugated (bs-24563R) at 1:1000 dilution and 4°C overnight incubation. Followed by conjugated secondary antibody incubation at r.t. for 60 min.

SELECTED CITATIONS

- **[IF=14.026]** Congcong Chen. et al. Radix Paeoniae Alba attenuates Radix Bupleuri-induced hepatotoxicity by modulating gut microbiota to alleviate the inhibition of saikosaponins on glutathione synthetase. J PHARM ANAL. 2023 Apr;; WB ;Rat. 10.1016/j.jpha.2023.04.016
- **[IF=8.8]** Dayue Liu. et al. Targeted delivery of rosuvastatin enhances treatment of HHcy-induced atherosclerosis using macrophage membrane-coated nanoparticles. J PHARM ANAL. 2024 Jan;; WB ;Mouse. 10.1016/j.jpha.2024.01.005
- **[IF=8.8]** Kobayashi Yuta. et al. Subclonal accumulation of immune escape mechanisms in microsatellite instability-high colorectal cancers. BRIT J CANCER. 2023 Aug;;1-14 IHC ;Human. 37596408
- **[IF=8.039]** Yifan Zhu. et al. Discovery of Selective P2Y6R Antagonists with High Affinity and In Vivo Efficacy for Inflammatory Disease Therapy. J MED CHEM. 2023;XXXX(XXX):XXX-XXX WB ;Mouse. 37078976
- **[IF=6.633]** Shuai Jiang. et al. Cardiac-specific overexpression of Claudin-5 exerts protection against myocardial

Important Note: This product as supplied is intended for research use only, not for use in human, therapeutic or diagnostic applications.

ischemia and reperfusion injury. BBA-MOL BASIS DIS. 2022 Sep;;166535 WB ;Mouse. 36058416