

bs-19505R**[Primary Antibody]****NUBPL Rabbit pAb****Bioss**
ANTIBODIES

www.bioss.com.cn

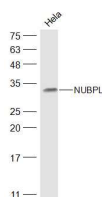
sales@bioss.com.cn

techsupport@bioss.com.cn

400-901-9800

— DATASHEET —

Host: Rabbit	Isotype: IgG	Applications: WB (1:500-2000)
Clonality: Polyclonal		Reactivity: Human (predicted: Mouse, Rat, Sheep, Cow, Dog, Horse)
GeneID: 80224	SWISS: Q8TB37	Predicted MW.: 34 kDa
Target: NUBPL		Subcellular Location: Cytoplasm
Immunogen: KLH conjugated synthetic peptide derived from human NUBPL: 1-100/319.		
Purification: affinity purified by Protein A		
Concentration: 1mg/ml		
Storage: 0.01M TBS (pH7.4) with 1% BSA, 0.02% Proclin300 and 50% Glycerol. Shipped at 4°C. Store at -20°C for one year. Avoid repeated freeze/thaw cycles.		
Background: This gene encodes a member of the Mrp/NBP35 ATP-binding proteins family. The encoded protein is required for the assembly of the respiratory chain NADH dehydrogenase (complex I), an oligomeric enzymatic complex located in the inner mitochondrial membrane. Mutations in this gene cause mitochondrial complex I deficiency. Alternative splicing results in multiple transcript variants. [provided by RefSeq, May 2014]		

— VALIDATION IMAGES —

Sample: HeLa(Human) Cell Lysate at 30 ug
Primary: Anti-NUBPL (bs-19505R) at 1/500
dilution Secondary: IRDye800CW Goat Anti-
Rabbit IgG at 1/20000 dilution Predicted band
size: 34 kD Observed band size: 34 kD