

**bs-2115R**

**[ Primary Antibody ]**

## Glu-Glu Tag Rabbit pAb

**BioSS**  
ANTIBODIES

www.bioss.com.cn

sales@bioss.com.cn

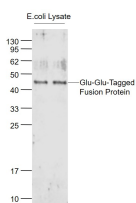
techsupport@bioss.com.cn

400-901-9800

### — DATASHEET —

<b>Host:</b> Rabbit	<b>Isotype:</b> IgG	<b>Applications:</b> <b>WB</b> (1:1000-5000) <b>ELISA</b> (1:1000-5000)
<b>Clonality:</b> Polyclonal		<b>Reactivity:</b> Species independent
<b>Target:</b> Glu-Glu Tag		
<b>Immunogen:</b> KLH conjugated Glu-Glu Tag: EYMPME.		
<b>Purification:</b> affinity purified by Protein A		
<b>Concentration:</b> 1mg/ml		
<b>Storage:</b> 0.01M TBS (pH7.4) with 1% BSA, 0.02% Proclin300 and 50% Glycerol. Shipped at 4°C. Store at -20°C for one year. Avoid repeated freeze/thaw cycles.		
<b>Background:</b> Glu-Glu Tag is a commonly used epitope tag engineered onto the N- or C- terminus of a protein of interest so that the tagged protein can be analyzed and visualized. Because of the small size of the epitope, it is unlikely to alter the activity of the cloned sequence.		

### — VALIDATION IMAGES —



Sample: Lane1: Glu-Glu-Tagged Fusion Protein  
Overexpression E.coli Lysate at 2ug Lane2: Glu-  
Glu-Tagged Fusion Protein Overexpression E.coli  
Lysate at 2ug Primary: Anti-Glu-Glu Tag  
(bs-2115R) at 1/1000 dilution Secondary:  
IRDye800CW Goat Anti-Rabbit IgG at 1/20000  
dilution Predicted band size: 41 kD Observed  
band size: 45 kD