
HS2ST1 Rabbit pAb

Catalog Number: bs-17389R

Target Protein: HS2ST1

Concentration: 1mg/ml

Form: Liquid

Host: Rabbit

Clonality: Polyclonal

Isotype: IgG

Applications: WB (1:500-2000)

Reactivity: Human, Mouse (predicted:Rat, Rabbit, Pig, Sheep, Cow, Zebrafish, Chicken, Dog, Horse)

Predicted MW: 42 kDa

Subcellular Cytoplasm

Locations:

Entrez Gene: 9653

Swiss Prot: Q7LGA3

Source: KLH conjugated synthetic peptide derived from human HS2ST1: 221-320/356.

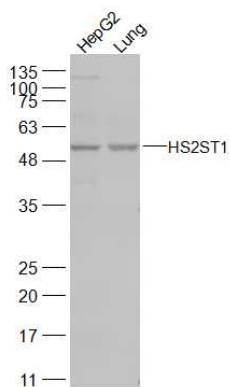
Purification: affinity purified by Protein A

Storage: 0.01M TBS (pH7.4) with 1% BSA, 0.02% Proclin300 and 50% Glycerol.

Shipped at 4°C. Store at -20°C for one year. Avoid repeated freeze/thaw cycles.

Background: Heparan sulfate structures, which are responsible for executing multiple biologic activities, are generated and regulated by heparan sulfate biosynthetic enzymes. HS2ST1 is a 356 amino acid single-pass type II membrane protein that localizes to the golgi apparatus and belongs to the sulfotransferase 3 family. Expressed as multiple alternatively spliced isoforms, HS2ST1 functions to catalyze the transfer of sulfate groups to hexuronic acid residues within maturing heparan sulfate (HS), an event which is crucial for proper HS-related ligand binding and signaling processes. HS2ST1 is subject to post-translational N-glycosylation and, in addition to its role in HS function, may be involved in proper kidney formation.

VALIDATION IMAGES



Sample: HepG2(Human) Cell Lysate at 30 ug Lung (Mouse) Lysate at 40 ug Primary: Anti-HS2ST1 (bs-17389R) at 1/300 dilution Secondary: IRDye800CW Goat Anti-Rabbit IgG at 1/20000 dilution Predicted band size: 42 kD Observed band size: 52 kD