

bs-17387R**[Primary Antibody]****HRC Rabbit pAb****BioSS**
ANTIBODIES

www.bioss.com.cn

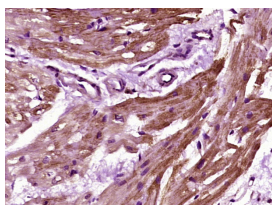
sales@bioss.com.cn

techsupport@bioss.com.cn

400-901-9800

— DATASHEET —

Host: Rabbit	Isotype: IgG	Applications: IHC-P (1:100-500) IHC-F (1:100-500) IF (1:100-500) Reactivity: Human Predicted MW.: 77 kDa Subcellular Location: Extracellular matrix
Clonality: Polyclonal		
GeneID: 3270	SWISS: P23327	
Target: HRC		
Immunogen: KLH conjugated synthetic peptide derived from human HRC: 21-120/699.		
Purification: affinity purified by Protein A		
Concentration: 1mg/ml		
Storage: 0.01M TBS (pH7.4) with 1% BSA, 0.02% Proclin300 and 50% Glycerol. Shipped at 4°C. Store at -20°C for one year. Avoid repeated freeze/thaw cycles.		
Background: HRC is a 699 amino acid that binds low-density lipoprotein with high affinity. As a high capacity calcium binding protein, HRC regulates the sequestration and release of calcium in the lumen of the junctional sarcoplasmic reticulum (SR) of cardiac, skeletal and smooth muscle. This mechanism may involve direct interaction between HRC and the cytoplasmic domain of Triadin, an integral membrane protein of the SR. The gene encoding HRC maps to human chromosome 19q13.33 and mouse chromosome 7 B4		

— VALIDATION IMAGES —

Paraformaldehyde-fixed, paraffin embedded (human heart tissue); Antigen retrieval by boiling in sodium citrate buffer (pH6.0) for 15min; Block endogenous peroxidase by 3% hydrogen peroxide for 20 minutes; Blocking buffer (normal goat serum) at 37°C for 30min; Antibody incubation with (HRC) Polyclonal Antibody, Unconjugated (bs-17387R) at 1:400 overnight at 4°C, followed by operating according to SP Kit(Rabbit) (sp-0023) instructions and DAB staining.

— SELECTED CITATIONS —

- **[IF=2.6]** Liu Xueqi. et al. In Vivo Evaluation of Self-assembled nano-Saikosaponin-a for Epilepsy Treatment. MOL BIOTECHNOL. 2023 Aug;;1-11 WB ;Mouse. 37608078