

bs-5628R**[Primary Antibody]****phospho-Alpha synuclein (Ser129) Rabbit pAb****BioSS**
ANTIBODIES

www.bioss.com.cn

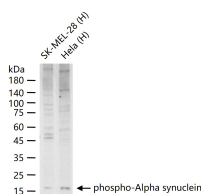
sales@bioss.com.cn

techsupport@bioss.com.cn

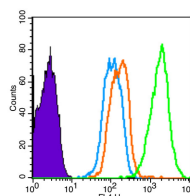
400-901-9800

— DATASHEET —

Host: Rabbit Clonality: Polyclonal GeneID: 6622 Target: Alpha synuclein (Ser129) Immunogen: KLH conjugated Synthesised phosphopeptide derived from human SNCA around the phosphorylation site of Ser129: MP(p-S)EE. Purification: affinity purified by Protein A Concentration: 1mg/ml Storage: 0.01M TBS (pH7.4) with 1% BSA, 0.02% Proclin300 and 50% Glycerol. Shipped at 4°C. Store at -20°C for one year. Avoid repeated freeze/thaw cycles. Background: Alpha-synuclein is a member of the synuclein family, which also includes beta- and gamma-synuclein. Synucleins are abundantly expressed in the brain and alpha- and beta-synuclein inhibit phospholipase D2 selectively. SNCA may serve to integrate presynaptic signaling and membrane trafficking. Defects in SNCA have been implicated in the pathogenesis of Parkinson disease. SNCA peptides are a major component of amyloid plaques in the brains of patients with Alzheimer's disease. Alternatively spliced transcripts encoding different isoforms have been identified for this gene. [provided by RefSeq, Feb 2016].	Isotype: IgG SWISS: P37840	Applications: WB (1:500-2000) Flow-Cyt (1ug/Test) Reactivity: Human Predicted MW.: 15 kDa Subcellular Location: Cell membrane ,Cytoplasm ,Nucleus
--	---	---

— VALIDATION IMAGES —

25 ug total protein per lane of various lysates (see on figure) probed with phospho-Alpha synuclein polyclonal antibody, unconjugated (bs-5628R) at 1:1000 dilution and 4°C overnight incubation. Followed by conjugated secondary antibody incubation at r.t. for 60 min.



Blank control (Black line): HUVEC (Black).
Primary Antibody (green line): Rabbit Anti-phospho-Alpha synuclein(Ser129) antibody (bs-5628R) Dilution: 3µg /10⁶ cells; Isotype Control Antibody (orange line): Rabbit IgG .
Secondary Antibody (white blue line): Goat anti-rabbit IgG-AF647 Dilution: 1µg /test. Protocol
The cells were fixed with 4% PFA (10min at room temperature)and then permeabilized with 90% ice-cold methanol for 20 min at room temperature. The cells were then incubated in 5%BSA to block non-specific protein-protein interactions for 30 min at room temperature .Cells stained with Primary Antibody for 30 min at room temperature. The secondary antibody used for 40 min at room temperature.
Acquisition of 20,000 events was performed.

— SELECTED CITATIONS —

- **[IF=5.682]** Yan, Minghao. et al. Chronic Microcystin-LR-Induced α -Synuclein Promotes Neuroinflammation Through Activation of the NLRP3 Inflammasome in Microglia. MOL NEUROBIOL. 2022 Nov;;1-17 WB ;Human. 36385231

Important Note: This product as supplied is intended for research use only, not for use in human, therapeutic or diagnostic applications.

- **[IF=4.6]** Yan Minghao. et al. Microcystin-LR Exposure Damages Neurons by Inducing α -Syn Aggregation via MAPK4/GATA2/SNCA and PP2A/GRKs Pathways. MOL NEUROBIOL. 2024 Dec;;1-17 IHC,WB,IF ;Mouse,Human. 39738876