

PLK1 Recombinant Rabbit mAb

Catalog Number: bsm-60594R

Target Protein: PLK1

Concentration: 1mg/ml

Form: Liquid

Host: Rabbit

Clonality: Recombinant

Clone No.: C2A5

Isotype: IgG

Applications: **WB** (1:500-1:2000)

Reactivity: Human

Subcellular Cytoplasm ,Nucleus

Locations:

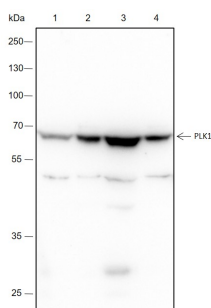
Purification: affinity purified by Protein A

Storage: 0.01M TBS (pH7.4) with 1% BSA, 0.02% Proclin300 and 50% Glycerol.

Shipped at 4°C. Store at -20°C for one year. Avoid repeated freeze/thaw cycles.

Background: The Ser/Thr protein kinase encoded by this gene belongs to the CDC5/Polo subfamily. It is highly expressed during mitosis and elevated levels are found in many different types of cancer. Depletion of this protein in cancer cells dramatically inhibited cell proliferation and induced apoptosis; hence, it is a target for cancer therapy. [provided by RefSeq, Sep 2015]

VALIDATION IMAGES



Blocking buffer: 5% NFDm/TBST Primary ab dilution: 1:2000 Primary ab incubation condition: 2 hours at room temperature Secondary ab: Goat Anti-Rabbit IgG H&L (HRP) Lysate: 1: HeLa, 2: K562, 3: HepG2, 4: Jurkat Protein loading quantity: 20 µg Exposure time: 60 s Predicted MW: 68 kDa Observed MW: 68 kDa