

DLL3 Recombinant Rabbit mAb

Catalog Number: bsm-60592R

Target Protein: DLL3

Concentration: 1mg/ml

Form: Liquid

Host: Rabbit

Clonality: Recombinant

Clone No.: G2E2

Isotype: IgG

Applications: WB (1:500-1:1000)

Reactivity: Human

Subcellular Cell membrane

Locations:

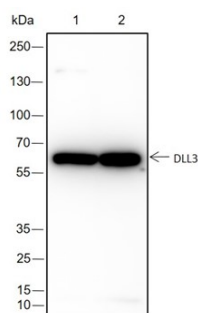
Purification: affinity purified by Protein A

Storage: 0.01M TBS (pH7.4) with 1% BSA, 0.02% Proclin300 and 50% Glycerol.

Shipped at 4°C. Store at -20°C for one year. Avoid repeated freeze/thaw cycles.

Background: Delta-like 3 (DLL3) is a transmembrane Delta-like protein that inhibits primary neurogenesis. It may be required to divert neurons along a specific differentiation pathway and plays a role in the formation of somite boundaries during segmentation of the paraxial mesoderm. DLL3 is one of five DSL proteins that bind to the Notch receptor and activates Notch signaling.

VALIDATION IMAGES



Blocking buffer: 5% NFDM/TBST Primary ab dilution: 1:1000 Primary ab incubation condition: 2 hours at room temperature Secondary ab: Goat Anti-Rabbit IgG H&L (HRP) Lysate: 1: TT, 2: A375 Protein loading quantity: 20 µg Exposure time: 60 s Predicted MW: 65 kDa Observed MW: 65 kDa