

bs-5615R**[Primary Antibody]****phospho-TRIM25 (Ser100) Rabbit pAb****BioSS**
ANTIBODIES

www.bioss.com.cn

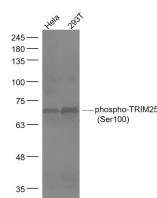
sales@bioss.com.cn

techsupport@bioss.com.cn

400-901-9800

— DATASHEET —

Host: Rabbit	Isotype: IgG	Applications: WB (1:500-2000)
Clonality: Polyclonal		Reactivity: Human (predicted: Mouse, Rat, Rabbit, Pig, Cow, Chicken, Horse)
GeneID: 7706	SWISS: Q14258	Predicted MW.: 71 kDa
Target: TRIM25 (Ser100)		Subcellular Location: Cytoplasm ,Nucleus
Immunogen: KLH conjugated Synthesised phosphopeptide derived from human TRIM25 around the phosphorylation site of Ser100: AP(p-S)PN.		
Purification: affinity purified by Protein A		
Concentration: 1mg/ml		
Storage: 0.01M TBS (pH7.4) with 1% BSA, 0.02% Proclin300 and 50% Glycerol. Shipped at 4°C. Store at -20°C for one year. Avoid repeated freeze/thaw cycles.		
Background: The protein encoded by this gene is a member of the tripartite motif (TRIM) family. The TRIM motif includes three zinc binding domains, a RING, a B box type 1 and a B box type 2, and a coiled coil region. The protein localizes to the cytoplasm. The presence of potential DNA binding and dimerization transactivation domains suggests that this protein may act as a transcription factor, similar to several other members of the TRIM family. Expression of the gene is upregulated in response to estrogen, and it is thought to mediate estrogen actions in breast cancer as a primary response gene.		

— VALIDATION IMAGES —

Sample: HeLa(Human) Cell Lysate at 30 ug
293T(Human) Cell Lysate at 30 ug Primary: Anti-phospho-TRIM25 (Ser100) (bs-5615R) at 1/1000
dilution Secondary: IRDye800CW Goat Anti-Rabbit IgG at 1/20000 dilution Predicted band size: 71 kD Observed band size: 71 kD