

bs-3608R**[Primary Antibody]****BioSS**
ANTIBODIES

www.bioss.com.cn

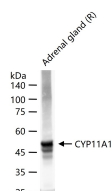
sales@bioss.com.cn

techsupport@bioss.com.cn

400-901-9800

CYP11A1 Rabbit pAb**— DATASHEET —**

Host: Rabbit	Isotype: IgG	Applications: WB (1:500-5000)
Clonality: Polyclonal		Reactivity: Rat
GeneID: 1583	SWISS: P05108	
Target: CYP11A1		
Immunogen: KLH conjugated synthetic peptide derived from human CYP11A1/P450SCC: 321-420/521.		Predicted MW.: 53 kDa
Purification: affinity purified by Protein A		Subcellular Location: Cytoplasm
Concentration: 1mg/ml		
Storage: 0.01M TBS (pH7.4) with 1% BSA, 0.02% Proclin300 and 50% Glycerol. Shipped at 4°C. Store at -20°C for one year. Avoid repeated freeze/thaw cycles.		
Background: This gene encodes a member of the cytochrome P450 superfamily of enzymes. The cytochrome P450 proteins are monooxygenases which catalyze many reactions involved in drug metabolism and synthesis of cholesterol, steroids and other lipids. This protein localizes to the mitochondrial inner membrane and catalyzes the conversion of cholesterol to pregnenolone, the first and rate-limiting step in the synthesis of the steroid hormones. Two transcript variants encoding different isoforms have been found for this gene. The cellular location of the smaller isoform is unclear since it lacks the mitochondrial-targeting transit peptide. [provided by RefSeq, Jul 2008]		

— VALIDATION IMAGES —

25 ug total protein per lane of various lysates (see on figure) probed with CYP11A1 polyclonal antibody, unconjugated (bs-3608R) at 1:1000 dilution and 4°C overnight incubation. Followed by conjugated secondary antibody incubation at r.t. for 60 min.

— SELECTED CITATIONS —

- **[IF=15.221]** Qiu JT et al. Micro RNA - 7 inhibits melatonin synthesis by acting as a linking molecule between leptin and norepinephrine signaling pathways in pig pineal gland. Journal of Pineal Research,2019 e12552. IHC ;Pig. 30618087
- **[IF=13.3]** Kehan Wang. et al. Autophagy regulation and protein kinase activity of PIK3C3 controls sertoli cell polarity through its negative regulation on SCIN (scinderin). AUTOPHAGY. 2023 Jul 14 WB ;Mouse,Human. 37450577
- **[IF=12.067]** Zhou, Xiaofeng. et al. DNMT1-mediated lncRNA IFFD controls the follicular development via targeting GLI1 by sponging miR-370. CELL DEATH DIFFER. 2022 Dec;;1-13 WB ;Mouse, Pig. 36566296
- **[IF=7.6]** Yan-Zhu Chen. et al. Acrolein exposure affects ovarian function by interfering with glycolysis and mitochondrial energy metabolism in mouse. ENVIRON POLLUT. 2024 Nov;361:124776 WB ;Mouse. 39173867

Important Note: This product as supplied is intended for research use only, not for use in human, therapeutic or diagnostic applications.

- **[IF=7.033]** Sailing Chen. et al. Biocompatible Assessment of Erythrocyte Membrane-Camouflaged Polymeric PLGA Nanoparticles in Pregnant Mice: Both on Maternal and Fetal/Juvenile Mice. INT J NANOMED. 2022 Dec;17:5899-5913 WB ;Mouse. 36474528