

bs-3406R**[Primary Antibody]****phospho-SMC1 (Ser360) Rabbit pAb****Bioss**
ANTIBODIES

www.bioss.com.cn

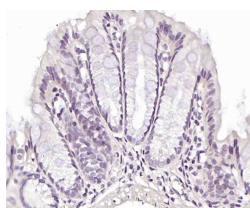
sales@bioss.com.cn

techsupport@bioss.com.cn

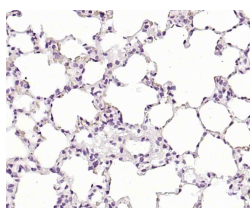
400-901-9800

— DATASHEET —

Host: Rabbit	Isotype: IgG	Applications: IHC-P (1:100-500)
Clonality: Polyclonal		IHC-F (1:100-500)
GeneID: 27127	SWISS: Q14683	IF (1:100-500)
Target: SMC1 (Ser360)		Reactivity: Mouse, Rat (predicted: Human, Pig, Sheep, Cow, Chicken, Dog, GuineaPig, Horse)
Immunogen: KLH conjugated Synthesised phosphopeptide derived from human SMC1 around the phosphorylation site of Ser360: SQ(p-S)QG.		Predicted MW.: 136 kDa
Purification: affinity purified by Protein A		Subcellular Location: Nucleus
Concentration: 1mg/ml		
Storage: 0.01M TBS (pH7.4) with 1% BSA, 0.02% Proclin300 and 50% Glycerol. Shipped at 4°C. Store at -20°C for one year. Avoid repeated freeze/thaw cycles.		
Background: Structural Maintenance of Chromosomes (SMC) family proteins play critical roles in various nuclear events that require structural changes of chromosomes, including mitotic chromosome organization, DNA recombination and repair and global transcriptional repression. The chromosome proteins are conserved in eukaryotes and can lead to mitotic chromosome segregation defects, suggesting a critical function of SMC family proteins in mitotic chromosome dynamics. SMC1 and SMC3 form a heterodimeric complex required for metaphase progression in mitotic cells. Specifically this SMC1/SMC3 complex is responsible for sister chromatid cohesion during metaphase. A number of cellular factors interact with hSMC1/hSMC3 during cell cycle. The major population of hSMC1/hSMC3 is in a complex with hRAD21 forming the human cohesion complex. Human cohesion complex associates with chromosomes which peaks at S phase and dissociates from chromosomes during G2/M transition. In addition, a subpopulation of hSMC1/hSMC3 associates tightly with nuclear matrix and centrosomes during interphase. A subset of hSMC1/hSMC3 is localized to spindle poles, spindles and kinetochores during mitosis when cohesin is in the cytoplasm. hSMC1/hSMC3 is required for spindle aster formation in vitro and reacts with nuclear mitotic apparatus protein in vivo.		

— VALIDATION IMAGES —

Paraformaldehyde-fixed, paraffin embedded (rat colon); Antigen retrieval by boiling in sodium citrate buffer (pH6.0) for 15min; Block endogenous peroxidase by 3% hydrogen peroxide for 20 minutes; Blocking buffer (normal goat serum) at 37°C for 30min; Incubation with (Phospho-SMC1 (Ser360)) Polyclonal Antibody, Unconjugated (bs-3406R) at 1:200 overnight at 4°C, followed by operating according to SP Kit(Rabbit) (sp-0023) instructions and DAB staining.



Paraformaldehyde-fixed, paraffin embedded (rat lung); Antigen retrieval by boiling in sodium citrate buffer (pH6.0) for 15min; Block endogenous peroxidase by 3% hydrogen peroxide for 20 minutes; Blocking buffer (normal goat serum) at 37°C for 30min; Incubation with (Phospho-SMC1 (Ser360)) Polyclonal Antibody, Unconjugated (bs-3406R) at 1:200 overnight at 4°C, followed by operating according to SP Kit(Rabbit) (sp-0023) instructions and DAB staining.