

bs-21184R

[Primary Antibody]

SHISA4 Rabbit pAb

BioSS
ANTIBODIES

www.bioss.com.cn

sales@bioss.com.cn

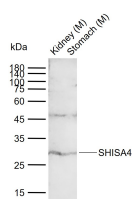
techsupport@bioss.com.cn

400-901-9800

— DATASHEET —

Host: Rabbit	Isotype: IgG	Applications: WB (1:500-2000)
Clonality: Polyclonal		Reactivity: Human, Mouse
GeneID: 149345	SWISS: Q96DD7	
Target: SHISA4		
Immunogen: KLH conjugated synthetic peptide derived from human SHISA4: 28-130/197.		Predicted MW.: 22 kDa
Purification: affinity purified by Protein A		Subcellular Location: Cell membrane
Concentration: 1mg/ml		
Storage: Preservative: 0.02% Proclin300, Constituents: 1% BSA, 0.01M PBS, pH7.4. Shipped at 4°C. Store at -20°C for one year. Avoid repeated freeze/thaw cycles.		

— VALIDATION IMAGES —



Sample: Lane 1: Mouse Kidney tissue lysates
Lane 2: Mouse Stomach tissue lysates
Primary: Anti-SHISA4 (bs-21184R) at 1/1000 dilution
Secondary: IRDye800CW Goat Anti-Rabbit IgG at 1/20000 dilution
Predicted band size: 22 kDa
Observed band size: 31 kDa