

bs-7375R**[Primary Antibody]****TIMM23 Rabbit pAb****BioSS**
ANTIBODIES

www.bioss.com.cn

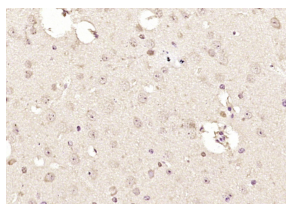
sales@bioss.com.cn

techsupport@bioss.com.cn

400-901-9800

— DATASHEET —

Host: Rabbit	Isotype: IgG	Applications: IHC-P (1:100-500) IHC-F (1:100-500) IF (1:100-500) Reactivity: Mouse (predicted: Human, Rat, Rabbit, Pig, Cow, Dog, Horse) Predicted MW.: 22 kDa Subcellular Location: Cytoplasm
Clonality: Polyclonal		
GeneID: 10431	SWISS: O14925	
Target: TIMM23		
Immunogen: KLH conjugated synthetic peptide derived from human TIMM23: 111-209/209.		
Purification: affinity purified by Protein A		
Concentration: 1mg/ml		
Storage: 0.01M TBS (pH7.4) with 1% BSA, 0.02% Proclin300 and 50% Glycerol. Shipped at 4°C. Store at -20°C for one year. Avoid repeated freeze/thaw cycles.		
Background: TIMM23 nomenclature and NM_006327.2 were associated with GeneID:10431 in build 37.1. Because of assembly problems in this region, it was later determined that GeneID:100287932 correctly represents the location of TIMM23. TIMM23 is now associated with GeneID:100287932 and NM_006327.2. [17 Mar 2010]		

— VALIDATION IMAGES —

Paraformaldehyde-fixed, paraffin embedded (mouse brain); Antigen retrieval by boiling in sodium citrate buffer (pH6.0) for 15min; Block endogenous peroxidase by 3% hydrogen peroxide for 20 minutes; Blocking buffer (normal goat serum) at 37°C for 30min; Antibody incubation with (TIMM23) Polyclonal Antibody, Unconjugated (bs-7375R) at 1:200 overnight at 4°C, followed by operating according to SP Kit(Rabbit) (sp-0023) instructions and DAB staining.