

bs-16450R

[Primary Antibody]

ZNF8 Rabbit pAb

Bioss
ANTIBODIES

www.bioss.com.cn

sales@bioss.com.cn

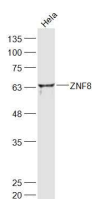
techsupport@bioss.com.cn

400-901-9800

— DATASHEET —

Host: Rabbit	Isotype: IgG	Applications: WB (1:500-2000)
Clonality: Polyclonal		Reactivity: Human
GeneID: 7554	SWISS: P17098	
Target: ZNF8		
Immunogen: KLH conjugated synthetic peptide derived from human ZNF8: 121-220/575.		Predicted MW.: 65 kDa
Purification: affinity purified by Protein A		Subcellular Location: Nucleus
Concentration: 1mg/ml		
Storage: 0.01M TBS (pH7.4) with 1% BSA, 0.02% Proclin300 and 50% Glycerol. Shipped at 4°C. Store at -20°C for one year. Avoid repeated freeze/thaw cycles.		
Background: ZNF8 is a 575 amino acid protein that belongs to the Krüppel C2H2-type zinc-finger protein family and contains seven C2H2-type zinc fingers and a KRAB domain. Localizing to the nucleus and ubiquitously expressed, ZNF8 is thought to play a role in transcriptional regulation and is encoded by a gene that maps to human chromosome 19q13.43.		

— VALIDATION IMAGES —



Sample: HeLa(Human) Cell Lysate at 30 ug
Primary: Anti-ZNF8 (bs-16450R) at 1/300 dilution
Secondary: IRDye800CW Goat Anti-Rabbit IgG at 1/20000 dilution Predicted band size: 65 kD
Observed band size: 65 kD