

bs-4348R**[Primary Antibody]****ZNF654 Rabbit pAb****BioSS**
ANTIBODIES

www.bioss.com.cn

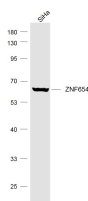
sales@bioss.com.cn

techsupport@bioss.com.cn

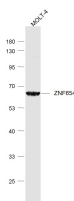
400-901-9800

— DATASHEET —

Host: Rabbit	Isotype: IgG	Applications: WB (1:500-2000)
Clonality: Polyclonal		Reactivity: Human (predicted: Mouse, Rat, Sheep, Cow, Dog)
GeneID: 55279	SWISS: Q8IZM8	
Target: ZNF654		Predicted MW.: 66 kDa
Immunogen: KLH conjugated synthetic peptide derived from human ZNF654: 1-100/581.		Subcellular Location: Nucleus
Purification: affinity purified by Protein A		
Concentration: 1mg/ml		
Storage: Preservative: 0.02% Proclin300, Constituents: 1% BSA, 0.01M PBS, pH7.4. Shipped at 4°C. Store at -20°C for one year. Avoid repeated freeze/thaw cycles.		
Background: ZNF654 (Zinc Finger Protein 654) is a Protein Coding gene. Diseases associated with ZNF654 include Malignant Choroid Melanoma and Pigmented Basal Cell Carcinoma. An important paralog of this gene is ZNF292.		

— VALIDATION IMAGES —

Sample: SiHa (Human) Cell Lysate at 30 ug
Primary: Anti-ZNF654 (bs-4348R) at 1/1000
Secondary: IRDye800CW Goat Anti-Rabbit IgG at 1/20000 dilution Predicted band size: 66 kD Observed band size: 66 kD



Sample: MOLT-4 (Human) Cell Lysate at 30 ug
Primary: Anti-ZNF654 (bs-4348R) at 1/1000
Secondary: IRDye800CW Goat Anti-Rabbit IgG at 1/20000 dilution Predicted band size: 66 kD Observed band size: 66 kD