
ZNF641 Rabbit pAb

Catalog Number: bs-4342R

Target Protein: ZNF641

Concentration: 1mg/ml

Form: Liquid

Host: Rabbit

Clonality: Polyclonal

Isotype: IgG

Applications: WB (1:500-2000)

Reactivity: Human (predicted: Mouse, Rat, Rabbit, Pig, Sheep, Cow, Dog, Horse)

Predicted MW: 50 kDa

Subcellular: Nucleus

Locations:

Entrez Gene: 121274

Swiss Prot: Q96N77

Source: KLH conjugated synthetic peptide derived from human ZNF641: 81-180/438.

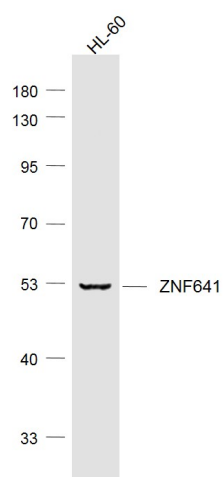
Purification: affinity purified by Protein A

Storage: Preservative: 0.02% Proclin300, Constituents: 1% BSA, 0.01M PBS, pH7.4.

Shipped at 4°C. Store at -20°C for one year. Avoid repeated freeze/thaw cycles.

Background: ZNF641 belongs to the krueppel C2H2-type zinc-finger protein family. It contains 5 C2H2-type zinc fingers and 1 KRAB domain. ZNF641 activates transcriptional activities of SRE and AP-1.

VALIDATION IMAGES



Sample: HL-60 (Human) Cell Lysate at 30 ug Primary: Anti-ZNF641 (bs-4342R) at 1/1000 dilution Secondary: IRDye800CW Goat Anti-Rabbit IgG at 1/20000 dilution Predicted band size: 50 kD Observed band size: 50 kD