

**bs-4336R****[ Primary Antibody ]****ZNF582 Rabbit pAb****BioSS**  
**ANTIBODIES**

www.bioss.com.cn

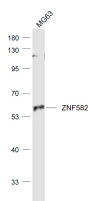
sales@bioss.com.cn

techsupport@bioss.com.cn

400-901-9800

**— DATASHEET —**

<b>Host:</b> Rabbit	<b>Isotype:</b> IgG	<b>Applications:</b> WB (1:500-2000)
<b>Clonality:</b> Polyclonal		<b>Reactivity:</b> Human
<b>GeneID:</b> 147948	<b>SWISS:</b> Q96NG8	
<b>Target:</b> ZNF582		
<b>Immunogen:</b> KLH conjugated synthetic peptide derived from human ZNF582: 451-517/517.		<b>Predicted MW.:</b> 60 kDa
<b>Purification:</b> affinity purified by Protein A		<b>Subcellular Location:</b> Nucleus
<b>Concentration:</b> 1mg/ml		
<b>Storage:</b> Preservative: 0.02% Proclin300, Constituents: 1% BSA, 0.01M PBS, pH7.4. Shipped at 4°C. Store at -20°C for one year. Avoid repeated freeze/thaw cycles.		
<b>Background:</b> The protein encoded by this gene is a zing finger protein and putative transcription factor that is highly methylated in cervical cancers. Two transcript variants encoding different isoforms have been found for this gene. [provided by RefSeq, Feb 2016]		

**— VALIDATION IMAGES —**

Sample: MG63 (Human) Cell Lysate at 30 ug  
Primary: Anti-ZNF582 (bs-4336R) at 1/1000  
dilution Secondary: IRDye800CW Goat Anti-  
Rabbit IgG at 1/20000 dilution Predicted band  
size: 60 kD Observed band size: 60 kD