

bs-20253R**[Primary Antibody]****phospho-Bcl-xL (Ser62) Rabbit pAb****Bioss**
ANTIBODIES

www.bioss.com.cn

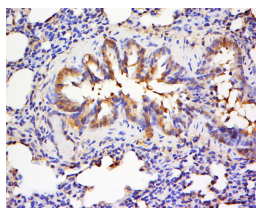
sales@bioss.com.cn

techsupport@bioss.com.cn

400-901-9800

— DATASHEET —

Host: Rabbit	Isotype: IgG	Applications: IHC-P (1:100-500) IHC-F (1:100-500) IF (1:100-500)
Clonality: Polyclonal		
GeneID: 598	SWISS: Q07817	
Target: Bcl-xL (Ser62)		Reactivity: Human, Rat (predicted: Mouse, Pig, Sheep, Cow, Dog, Horse)
Immunogen: KLH conjugated Synthesised phosphopeptide derived from human Bcl-xL around the phosphorylation site of Ser62: AD(p-S)PA.		
Purification: affinity purified by Protein A		Predicted MW.: 26 kDa
Concentration: 1mg/ml		Subcellular Location: Cell membrane ,Cytoplasm ,Nucleus
Storage: Preservative: 0.02% Proclin300, Constituents: 1% BSA, 0.01M PBS, pH7.4. Shipped at 4°C. Store at -20°C for one year. Avoid repeated freeze/thaw cycles.		
Background: bs-1336P is one synthetic peptide derived from human Bcl-xL. The protein encoded by this gene belongs to the BCL-2 protein family. BCL-2 family members form hetero- or homodimers and act as anti- or pro-apoptotic regulators that are involved in a wide variety of cellular activities. The proteins encoded by this gene are located at the outer mitochondrial membrane, and have been shown to regulate outer mitochondrial membrane channel (VDAC) opening. VDAC regulates mitochondrial membrane potential, and thus controls the production of reactive oxygen species and release of cytochrome C by mitochondria, both of which are the potent inducers of cell apoptosis. Two alternatively spliced transcript variants, which encode distinct isoforms, have been reported. The longer isoform acts as an apoptotic inhibitor and the shorter form acts as an apoptotic activator. [provided by RefSeq, Jul 2008].		

— VALIDATION IMAGES —

Tissue/cell: Rat lung tissue; 4% Paraformaldehyde-fixed and paraffin-embedded; Antigen retrieval: citrate buffer (0.01M, pH 6.0), Boiling bathing for 15min; Block endogenous peroxidase by 3% Hydrogen peroxide for 30min; Blocking buffer (normal goat serum,C-0005) at 37°C for 20 min; Incubation: Anti-phospho-Bcl-xL(Ser62) Polyclonal Antibody, Unconjugated(bs-20253R) 1:500, overnight at 4°C, followed by conjugation to the secondary antibody(SP-0023) and DAB(C-0010) staining