

bs-8700R

[Primary Antibody]

SHC4 Rabbit pAb

Bioss
ANTIBODIES

www.bioss.com.cn

sales@bioss.com.cn

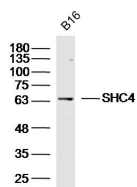
techsupport@bioss.com.cn

400-901-9800

— DATASHEET —

Host: Rabbit	Isotype: IgG	Applications: WB (1:500-2000)
Clonality: Polyclonal		Reactivity: Mouse (predicted: Human, Rat, Dog, Horse)
GeneID: 399694	SWISS: Q6S5L8	
Target: SHC4		Predicted MW.: 69 kDa
Immunogen: KLH conjugated synthetic peptide derived from human SHC4: 451-550/630.		Subcellular Location: Cell membrane
Purification: affinity purified by Protein A		
Concentration: 1mg/ml		
Storage: Preservative: 0.02% Proclin300, Constituents: 1% BSA, 0.01M PBS, pH7.4. Shipped at 4°C. Store at -20°C for one year. Avoid repeated freeze/thaw cycles.		

— VALIDATION IMAGES —



Sample: B16 (Mouse) Lysate at 40 ug Primary:

Anti-SHC4(bs-8700R) at 1/300 dilution

Secondary: IRDye800CW Goat Anti-Rabbit IgG at

1/20000 dilution Predicted band size: 69kD

Observed band size: 65kD