

**bs-9850R****[ Primary Antibody ]****BST2 Rabbit pAb****Bioss**  
**ANTIBODIES**

www.bioss.com.cn

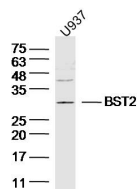
sales@bioss.com.cn

techsupport@bioss.com.cn

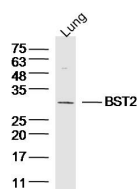
400-901-9800

**— DATASHEET —**

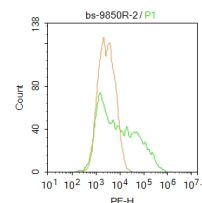
<b>Host:</b> Rabbit <b>Clonality:</b> Polyclonal <b>GeneID:</b> 684 <b>Target:</b> BST2 <b>Immunogen:</b> KLH conjugated synthetic peptide derived from human BST2/CD317: 1-100/180. <b>Purification:</b> affinity purified by Protein A <b>Concentration:</b> 1mg/ml <b>Storage:</b> 0.01M TBS (pH7.4) with 1% BSA, 0.02% Proclin300 and 50% Glycerol. Shipped at 4°C. Store at -20°C for one year. Avoid repeated freeze/thaw cycles. <b>Background:</b> Bone marrow stromal cells act as regulators for B-cell growth and development through their surface molecules and cytokines. Bone marrow stromal antigen-2 (BST-2), also designated CD317 antigen, is a single- pass type II membrane protein. BST-2, which is expressed mainly on synovial cell lines and bone marrow stromal cell lines, is primarily expressed in liver, heart, placenta and lung tissues. BST-2 is thought to be involved in pre-B cell growth. It has been implicated in B cell activation in rheumatoid arthritis.	<b>Isotype:</b> IgG  <b>SWISS:</b> Q10589	<b>Applications:</b> <b>WB</b> (1:500-2000) <b>Flow-Cyt</b> (2ug/Test)  <b>Reactivity:</b> Human, Mouse  <b>Predicted MW.:</b> 18 kDa  <b>Subcellular Location:</b> Cell membrane ,Cytoplasm
--	---	---

**— VALIDATION IMAGES —**

Lane 1: (Human/cell line)U937 lysates probed with BST2 Polyclonal Antibody, Unconjugated (Catalog #bs-9850R) at 1:300 overnight at 4°C. Followed by a conjugated secondary antibody (Secondary Catalog #926-32211) at 1:10000 for 60 min at 37°C.



Lane 1: (mouse/tissue)Lung lysates probed with BST2 Polyclonal Antibody, Unconjugated (Catalog #bs-9850R) at 1:300 overnight at 4°C. Followed by a conjugated secondary antibody (Secondary Catalog #926-32211) at 1:10000 for 60 min at 37°C.



Blank control: A431. Primary Antibody (green line): Rabbit Anti-BST2 antibody (bs-9850R) Dilution: 2µg /10<sup>6</sup> cells; Isotype Control Antibody (orange line): Rabbit IgG . Secondary Antibody : Goat anti-rabbit IgG-PE Dilution: 1µg /test. Protocol The cells were fixed with 4% PFA (10min at room temperature)and then permeabilized with PBST for 20 min at room temperature. The cells were then incubated in 5%BSA to block non-specific protein-protein interactions for 30 min at at room temperature .Cells stained with Primary Antibody for 30 min at room temperature. The secondary antibody used for 40 min at room temperature. Acquisition of 20,000 events was performed.