

**bs-9853R****[ Primary Antibody ]****CSEN Rabbit pAb****Bioss**  
**ANTIBODIES**

www.bioss.com.cn

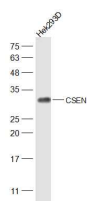
sales@bioss.com.cn

techsupport@bioss.com.cn

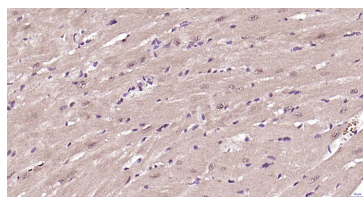
400-901-9800

**— DATASHEET —**

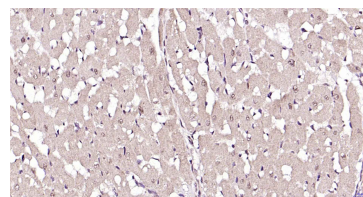
<b>Host:</b> Rabbit	<b>Isotype:</b> IgG	<b>Applications:</b> <b>WB</b> (1:500-2000)
<b>Clonality:</b> Polyclonal		<b>IHC-P</b> (1:100-500)
<b>GeneID:</b> 30818	<b>SWISS:</b> Q9Y2W7	<b>IHC-F</b> (1:100-500)
<b>Target:</b> CSEN		<b>IF</b> (1:50-200)
<b>Immunogen:</b> KLH conjugated synthetic peptide derived from human CSEN: 51-150/256.		<b>Reactivity:</b> Human, Mouse, Rat (predicted: Rabbit, Pig, Cow, Dog)
<b>Purification:</b> affinity purified by Protein A		<b>Predicted MW.:</b> 28 kDa
<b>Concentration:</b> 1mg/ml		<b>Subcellular Location:</b> Cell membrane ,Cytoplasm ,Nucleus
<b>Storage:</b> 0.01M TBS (pH7.4) with 1% BSA, 0.02% Proclin300 and 50% Glycerol. Shipped at 4°C. Store at -20°C for one year. Avoid repeated freeze/thaw cycles.		
<b>Background:</b> CSEN is a Ca <sup>2+</sup> -regulated transcriptional repressor that specifically binds to the downstream regulatory elements (DRE). DRE is a regulatory sequence that silences basal transcription and is localized to the promoter region of the gene encoding human prodynorphin, an opioid peptide involved in memory acquisition and pain. DREAM forms functional homotetramers that are required for the interaction with the DRE. This association is highly influenced by calcium, as an increase in Ca <sup>2+</sup> directly inhibits DREAM binding and thereby blocks the repressor activity of DREAM. DREAM transcripts are detected in brain, thymus and thyroid gland, and it is expressed as a nuclear protein. DREAM has been shown to inhibit transcription of other proteins containing DRE-like motifs, including the gene encoding for the AP-1 transcription factor c-Fos, suggesting that DREAM may influence a wide variety of cellular genes.		

**— VALIDATION IMAGES —**

Sample: Hek293D serum Lysate at 40 ug Primary:  
Anti-CSEN (bs-9853R) at 1/2000 dilution  
Secondary: IRDye800CW Goat Anti-Rabbit IgG at  
1/20000 dilution Predicted band size: 28 kD  
Observed band size: 28kD



Paraformaldehyde-fixed, paraffin embedded  
Mouse Heart; Antigen retrieval by boiling in  
sodium citrate buffer (pH6.0) for 15 min;  
Antibody incubation with CSEN Polyclonal  
Antibody, Unconjugated (bs-9853R) at 1:200  
overnight at 4°C, followed by conjugation to the  
SP Kit (Rabbit, SP-0023) and DAB (C-0010)  
staining.



Paraformaldehyde-fixed, paraffin embedded Rat  
Heart; Antigen retrieval by boiling in sodium  
citrate buffer (pH6.0) for 15 min; Antibody  
incubation with CSEN Polyclonal Antibody,  
Unconjugated (bs-9853R) at 1:200 overnight at  
4°C, followed by conjugation to the SP Kit  
(Rabbit, SP-0023) and DAB (C-0010) staining.