

## mouse Ly-6C Rat mAb

Catalog Number: bsm-30278A

Target Protein: mouse Ly-6C

Form: Liquid

Host: Rat

Clonality: Monoclonal

Clone No.: 1C4

Isotype: Rat IgG2c, k

Applications: IHC-P (1:100-500), IHC-F (1:100-500), IF (1:100-500)

Reactivity: Mouse

Predicted MW: 14 kDa

Detected MW: 21-25 kDa

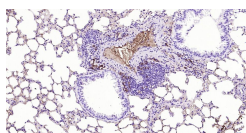
Purification: affinity purified by Protein G

Storage: 0.01M TBS (pH7.4).

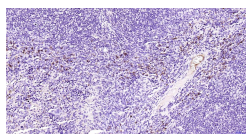
Shipped at 4°C. Store at -20°C for one year. Avoid repeated freeze/thaw cycles.

**Background:** Predicted to enable acetylcholine receptor binding activity and acetylcholine receptor inhibitor activity. Predicted to be involved in acetylcholine receptor signaling pathway. Located in cell surface. Orthologous to human LY6H (lymphocyte antigen 6 family member H). [provided by Alliance of Genome Resources, Apr 2022]

### VALIDATION IMAGES



Paraformaldehyde-fixed, paraffin embedded Mouse lung; Antigen retrieval by boiling in sodium citrate buffer (pH6.0) for 15 min; Antibody incubation with Ly-6C Monoclonal Antibody, Unconjugated(bsm-30278A) at 1:200 overnight at 4°C, followed by conjugation to the bs-0293G-HRP and DAB (C-0010) staining.



Paraformaldehyde-fixed, paraffin embedded Mouse spleen; Antigen retrieval by boiling in sodium citrate buffer (pH6.0) for 15 min; Antibody incubation with Ly-6C Monoclonal Antibody, Unconjugated(bsm-30278A) at 1:200 overnight at 4°C, followed by conjugation to the bs-0293G-HRP and DAB (C-0010) staining.