

bs-5394R**[Primary Antibody]****phospho-IL-1R1 (Tyr496) Rabbit pAb****BioSS**
ANTIBODIES

www.bioss.com.cn

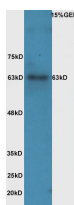
sales@bioss.com.cn

techsupport@bioss.com.cn

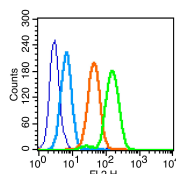
400-901-9800

— DATASHEET —

Host: Rabbit	Isotype: IgG	Applications: WB (1:500-2000) Flow-Cyt (1µg/Test)
Clonality: Polyclonal		
GeneID: 3554	SWISS: P14778	
Target: IL-1R1 (Tyr496)		Reactivity: Human, Mouse (predicted: Rat, Pig, Dog, Horse)
Immunogen: KLH conjugated Synthesised phosphopeptide derived from human IL-1R1 around the phosphorylation site of Tyr496: QD(p-Y)EK.		
Purification: affinity purified by Protein A		Predicted MW.: 63 kDa
Concentration: 1mg/ml		Subcellular Location: Secreted ,Cell membrane
Storage: 0.01M TBS (pH7.4) with 1% BSA, 0.02% Proclin300 and 50% Glycerol. Shipped at 4°C. Store at -20°C for one year. Avoid repeated freeze/thaw cycles.		
Background: The protein encoded by this gene is a cytokine receptor that belongs to the interleukin 1 receptor family. This protein is a receptor for interleukin alpha (IL1A), interleukin beta (IL1B), and interleukin 1 receptor, type I (IL1R1/IL1RA). It is an important mediator involved in many cytokine induced immune and inflammatory responses. This gene along with interleukin 1 receptor, type II (IL1R2), interleukin 1 receptor-like 2 (IL1RL2), and interleukin 1 receptor-like 1 (IL1RL1) form a cytokine receptor gene cluster in a region mapped to chromosome 2q12. [provided by RefSeq].		

— VALIDATION IMAGES —

Sample: Intestine (Mouse) Lysate at 40 ug
 Primary: Anti-phospho-IL-1R1(Tyr496)
 (bs-5394R) at 1/300 dilution Secondary: HRP
 conjugated Goat-Anti-rabbit IgG (bs-0295G-HRP)
 at 1/5000 dilution Predicted band size: 63 kD
 Observed band size: 63 kD



Blank control (blue line): MCF7 (fixed with 70% methanol overnight at 4°C). Primary Antibody (green line): Rabbit Anti-phospho-IL-1R1(Tyr496)antibody (bs-5394R),Dilution: 1µg /10⁶ cells; Isotype Control Antibody (orange line): Rabbit IgG . Secondary Antibody (white blue line): Goat anti-rabbit IgG-PE,Dilution: 1µg /test.