

bs-17384R**[Primary Antibody]****HPS6 Rabbit pAb****BioSS**
ANTIBODIES

www.bioss.com.cn

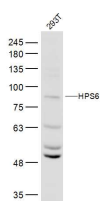
sales@bioss.com.cn

techsupport@bioss.com.cn

400-901-9800

— DATASHEET —

Host: Rabbit	Isotype: IgG	Applications: WB (1:500-2000)
Clonality: Polyclonal		
GeneID: 79803	SWISS: Q86YV9	
Target: HPS6		
Immunogen: KLH conjugated synthetic peptide derived from human HPS6: 501-600/775.		
Purification: affinity purified by Protein A		Reactivity: Human (predicted: Mouse, Rat, Pig, Cow, Horse)
Concentration: 1mg/ml		
Storage: 0.01M TBS (pH7.4) with 1% BSA, 0.02% Proclin300 and 50% Glycerol. Shipped at 4°C. Store at -20°C for one year. Avoid repeated freeze/thaw cycles.		
Background: This intronless gene encodes a protein that may play a role in organelle biogenesis associated with melanosomes, platelet dense granules, and lysosomes. This protein interacts with Hermansky-Pudlak syndrome 5 protein. Mutations in this gene are associated with Hermansky-Pudlak syndrome type 6. [provided by RefSeq, Jul 2008]		
		Predicted MW.: 83 kDa
		Subcellular Location: Cytoplasm

— VALIDATION IMAGES —

Sample: 293T(Human) Cell Lysate at 30 ug
Primary: Anti-HPS6 (bs-17384R) at 1/300 dilution
Secondary: IRDye800CW Goat Anti-Rabbit IgG at 1/20000 dilution Predicted band size: 83 kD
Observed band size: 83 kD