

**bs-17380R**

**[ Primary Antibody ]**

## HPS2 Rabbit pAb

**BioSS**  
ANTIBODIES

www.bioss.com.cn

sales@bioss.com.cn

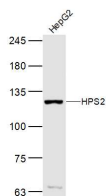
techsupport@bioss.com.cn

400-901-9800

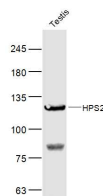
### — DATASHEET —

<b>Host:</b> Rabbit	<b>Isotype:</b> IgG	<b>Applications:</b> WB (1:500-2000)
<b>Clonality:</b> Polyclonal		<b>Reactivity:</b> Human, Mouse (predicted: Rat, Rabbit, Pig, Sheep, Cow, Dog, Cat, Horse)
<b>GeneID:</b> 8546	<b>SWISS:</b> O00203	<b>Predicted MW.:</b> 121 kDa
<b>Target:</b> HPS2		<b>Subcellular Location:</b> Cytoplasm
<b>Immunogen:</b> KLH conjugated synthetic peptide derived from human HPS2: 1-100/1094.		
<b>Purification:</b> affinity purified by Protein A		
<b>Concentration:</b> 1mg/ml		
<b>Storage:</b> 0.01M TBS (pH7.4) with 1% BSA, 0.02% Proclin300 and 50% Glycerol. Shipped at 4°C. Store at -20°C for one year. Avoid repeated freeze/thaw cycles.		
<b>Background:</b> This gene encodes a protein that may play a role in organelle biogenesis associated with melanosomes, platelet dense granules, and lysosomes. The encoded protein is part of the heterotetrameric AP-3 protein complex which interacts with the scaffolding protein clathrin. Mutations in this gene are associated with Hermansky-Pudlak syndrome type 2. Two transcript variants encoding different isoforms have been found for this gene. [provided by RefSeq, Nov 2012]		

### — VALIDATION IMAGES —



Sample: HepG2(Human) Lysate at 40 ug Primary:  
Anti- HPS2 (bs-17380R) at 1/300 dilution  
Secondary: IRDye800CW Goat Anti-Rabbit IgG at  
1/20000 dilution Predicted band size: 121kD  
Observed band size: 121 kD



Sample: Testis(Mouse) Lysate at 40 ug Primary:  
Anti- HPS2 (bs-17380R) at 1/300 dilution  
Secondary: IRDye800CW Goat Anti-Rabbit IgG at  
1/20000 dilution Predicted band size: 121kD  
Observed band size: 121 kD