

bs-17376R**[Primary Antibody]****CBX4 Rabbit pAb****Bioss**
ANTIBODIES

www.bioss.com.cn

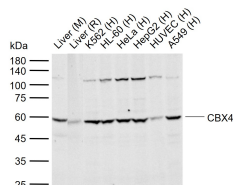
sales@bioss.com.cn

techsupport@bioss.com.cn

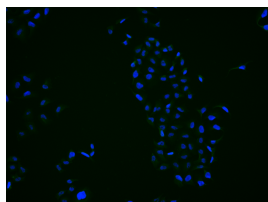
400-901-9800

— DATASHEET —

Host: Rabbit Clonality: Polyclonal GeneID: 8535 Target: CBX4 Immunogen: KLH conjugated synthetic peptide derived from human CBX4: 401-500/560. Purification: affinity purified by Protein A Concentration: 1mg/ml Storage: 0.01M TBS (pH7.4) with 1% BSA, 0.02% Proclin300 and 50% Glycerol. Shipped at 4°C. Store at -20°C for one year. Avoid repeated freeze/thaw cycles. Background: Enables SUMO binding activity; SUMO ligase activity; and enzyme binding activity. Involved in negative regulation of transcription by RNA polymerase II. Located in nuclear body. Part of PRC1 complex. Implicated in hepatocellular carcinoma. Biomarker of hepatocellular carcinoma. [provided by Alliance of Genome Resources, Apr 2022]	Isotype: IgG SWISS: O00257	Applications: WB (1:500-2000) ICC/IF (1:100) Reactivity: Human, Mouse, Rat (predicted: Pig, Sheep, Dog, Horse) Predicted MW.: 61 kDa Subcellular Location: Nucleus
--	---	---

— VALIDATION IMAGES —

Sample: Lane 1: Mouse Liver tissue lysates
 Lane 2: Rat Liver tissue lysates
 Lane 3: Human K562 cell lysates
 Lane 4: Human HL-60 cell lysates
 Lane 5: Human HeLa cell lysates
 Lane 6: Human HepG2 cell lysates
 Lane 7: Human HUVEC cell lysates
 Lane 8: Human A549 cell lysates
 Primary: Anti-CBX4 (bs-17376R) at 1/1000 dilution
 Secondary: IRDye800CW Goat Anti-Rabbit IgG at 1/20000 dilution
 Predicted band size: 61 kDa
 Observed band size: 61 kDa



Hela cell; 4% Paraformaldehyde-fixed; Triton X-100 at room temperature for 20 min; Blocking buffer (normal goat serum, C-0005) at 37°C for 20 min; Antibody incubation with (CBX4) polyclonal Antibody, Unconjugated (bs-17376R) 1:25, 90 minutes at 37°C; followed by a conjugated Goat Anti-Rabbit IgG antibody at 37°C for 90 minutes, DAPI (blue, C02-04002) was used to stain the cell nuclei.

— SELECTED CITATIONS —

- **[IF=4.658]** Hu C et al. CBX4 promotes the proliferation and metastasis via regulating BMI - 1 in lung cancer. J Cell Mol Med. 2019 Nov 13. WB,IHC ;Human&Mouse. 31724308
- **[IF=4.011]** Xu J et al. Regulatory effect of two Trichinella spiralis serine protease inhibitors on the host's immune system. Sci Rep. 2019 Nov 19;9(1):17045. WB ;Mouse. 31745105
- **[IF=1.91]** Han, Xiao, et al. "HIF-1α SUMOylation affects the stability and transcriptional activity of HIF-1α in human lens epithelial cells." Graefes Archive for Clinical and Experimental Ophthalmology 253.8 (2015): 1279-1290. WB ;Human. 25877955

Important Note: This product as supplied is intended for research use only, not for use in human, therapeutic or diagnostic applications.