

**bs-17373R****[ Primary Antibody ]****phospho-HP1 alpha (Ser92) Rabbit pAb****BioSS**  
**ANTIBODIES**

www.bioss.com.cn

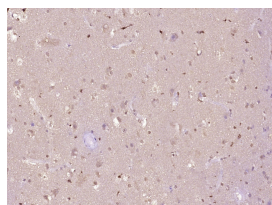
sales@bioss.com.cn

techsupport@bioss.com.cn

400-901-9800

**— DATASHEET —**

<b>Host:</b> Rabbit	<b>Isotype:</b> IgG	<b>Applications:</b> <b>IHC-P</b> (1:100-500) <b>IHC-F</b> (1:100-500) <b>IF</b> (1:100-500)
<b>Clonality:</b> Polyclonal		
<b>GeneID:</b> 23468	<b>SWISS:</b> P45973	
<b>Target:</b> HP1 alpha (Ser92)		<b>Reactivity:</b> Human (predicted: Pig, Sheep, Cow, Dog, Horse)
<b>Immunogen:</b> KLH conjugated synthesised phosphopeptide derived from human HP1 alpha around the phosphorylation site of Ser92: RK(p-S)NF.		
<b>Purification:</b> affinity purified by Protein A		<b>Predicted MW.:</b> 22 kDa
<b>Concentration:</b> 1mg/ml		<b>Subcellular Location:</b> Chromosome ,Centromere ,Nucleus
<b>Storage:</b> 0.01M TBS (pH7.4) with 1% BSA, 0.02% Proclin300 and 50% Glycerol. Shipped at 4°C. Store at -20°C for one year. Avoid repeated freeze/thaw cycles.		
<b>Background:</b> This gene encodes a highly conserved nonhistone protein, which is a member of the heterochromatin protein family. The protein is enriched in the heterochromatin and associated with centromeres. The protein has a single N-terminal chromodomain which can bind to histone proteins via methylated lysine residues, and a C-terminal chromo shadow-domain (CSD) which is responsible for the homodimerization and interaction with a number of chromatin-associated nonhistone proteins. The encoded product is involved in the formation of functional kinetochore through interaction with essential kinetochore proteins. The gene has a pseudogene located on chromosome 3. Multiple alternatively spliced variants, encoding the same protein, have been identified. [provided by RefSeq].		

**— VALIDATION IMAGES —**

Paraformaldehyde-fixed, paraffin embedded (Human brain glioma); Antigen retrieval by boiling in sodium citrate buffer (pH6.0) for 15min; Block endogenous peroxidase by 3% hydrogen peroxide for 20 minutes; Blocking buffer (normal goat serum) at 37°C for 30min; Antibody incubation with (phospho-HP1 alpha (Ser92)) Polyclonal Antibody, Unconjugated (bs-17373R) at 1:400 overnight at 4°C, followed by operating according to SP Kit(Rabbit) (sp-0023) instructions and DAB staining.