

bs-17366R**[Primary Antibody]****HOXC11 Rabbit pAb****BioSS**
ANTIBODIES

www.bioss.com.cn

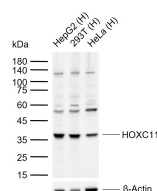
sales@bioss.com.cn

techsupport@bioss.com.cn

400-901-9800

— DATASHEET —

Host: Rabbit	Isotype: IgG	Applications: WB (1:500-2000)
Clonality: Polyclonal		
GeneID: 3227	SWISS: O43248	
Target: HOXC11		
Immunogen: KLH conjugated synthetic peptide derived from human HOXC11: 211-304/304.		
Purification: affinity purified by Protein A		Reactivity: Human (predicted: Mouse, Rat, Sheep, Cow, Chicken, Dog, Horse)
Concentration: 1mg/ml		
Storage: 0.01M TBS (pH7.4) with 1% BSA, 0.02% Proclin300 and 50% Glycerol. Shipped at 4°C. Store at -20°C for one year. Avoid repeated freeze/thaw cycles.		
Background: This gene belongs to the homeobox family of genes. The homeobox genes encode a highly conserved family of transcription factors that play an important role in morphogenesis in all multicellular organisms. Mammals possess four similar homeobox gene clusters, HOXA, HOXB, HOXC and HOXD, which are located on different chromosomes and consist of 9 to 11 genes arranged in tandem. This gene is one of several homeobox HOXC genes located in a cluster on chromosome 12. The product of this gene binds to a promoter element of the lactase-phlorizin hydrolase. It also may play a role in early intestinal development. An alternatively spliced variant encoding a shorter isoform has been described but its full-length nature has not been determined. [provided by RefSeq, Jul 2008]		
		Predicted MW.: 34 kDa
		Subcellular Location: Nucleus

— VALIDATION IMAGES —

Sample: Lane 1: Human HepG2 cell lysates Lane 2: Human 293T cell lysates Lane 3: Human HeLa cell lysates Primary: Anti-HOXC11 (bs-17366R) at 1/1000 dilution Secondary: IRDye800CW Goat Anti-Rabbit IgG at 1/20000 dilution Predicted band size: 34 kDa Observed band size: 36 kDa