

bs-21785R**[Primary Antibody]****ZEB1/NIL2A Rabbit pAb****Bioss**
ANTIBODIES

www.bioss.com.cn

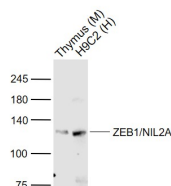
sales@bioss.com.cn

techsupport@bioss.com.cn

400-901-9800

— DATASHEET —

Host: Rabbit	Isotype: IgG	Applications: WB (1:500-2000)
Clonality: Polyclonal		Reactivity: Human, Mouse (predicted: Rat, Rabbit, Pig, Sheep, Cow, Chicken, Dog)
GeneID: 6935	SWISS: P37275	
Target: ZEB1/NIL2A		Predicted MW.: 124 kDa
Immunogen: KLH conjugated synthetic peptide derived from human ZEB1/NIL2A : 71-170/1124.		Subcellular Location: Nucleus
Purification: affinity purified by Protein A		
Concentration: 1mg/ml		
Storage: 0.01M TBS (pH7.4) with 1% BSA, 0.02% Proclin300 and 50% Glycerol. Shipped at 4°C. Store at -20°C for one year. Avoid repeated freeze/thaw cycles.		
Background: This gene encodes a zinc finger transcription factor. The encoded protein likely plays a role in transcriptional repression of interleukin 2. Mutations in this gene have been associated with posterior polymorphous corneal dystrophy-3 and late-onset Fuchs endothelial corneal dystrophy. Alternatively spliced transcript variants encoding different isoforms have been described.[provided by RefSeq, Mar 2010]		

— VALIDATION IMAGES —

Sample: Lane 1: Thymus (Mouse) Lysate at 40 ug
Lane 2: H9C2 (Human) Cell Lysate at 30 ug
Primary: Anti-ZEB1/NIL2A (bs-21785R) at 1/1000
dilution Secondary: IRDye800CW Goat Anti-
Rabbit IgG at 1/20000 dilution Predicted band
size: 110 kD Observed band size: 110 kD

— SELECTED CITATIONS —

- **[IF=14.3]** Jiafei Chen. et al. Customized Hydrogel System for the Spatiotemporal Sequential Treatment of Periodontitis Propelled by ZEB1. ADV SCI. 2025 Apr;;2503338 WB ;Mouse. 40184628
- **[IF=3.7]** Yuqi Shi. et al. Inhibition of PD-L1 expression in non-small cell lung cancer may reduce vasculogenic mimicry formation by inhibiting the epithelial mesenchymal transformation process. EXP CELL RES. 2024 Apr;437:113996 WB ;Mouse,Human. 38508327
- **[IF=3.8]** Wenjuan Li. et al. PD-L1 knockdown suppresses vasculogenic mimicry of non-small cell lung cancer by modulating ZEB1-triggered EMT. BMC CANCER. 2024; 24: 633 WB,IHC ;Human. 38783271