

bs-21783R**[Primary Antibody]****ACVRL1 Rabbit pAb****Bioss**
ANTIBODIES

www.bioss.com.cn

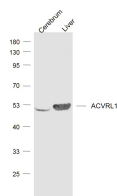
sales@bioss.com.cn

techsupport@bioss.com.cn

400-901-9800

— DATASHEET —

Host: Rabbit	Isotype: IgG	Applications: WB (1:500-2000)
Clonality: Polyclonal		Reactivity: Mouse (predicted: Human, Rat)
GeneID: 94	SWISS: P37023	
Target: ACVRL1		Predicted MW.: 53 kDa
Immunogen: KLH conjugated synthetic peptide derived from human ACVRL1 : 22-118/503. < Extracellular >		Subcellular Location: Cell membrane
Purification: affinity purified by Protein A		
Concentration: 1mg/ml		
Storage: 0.01M TBS (pH7.4) with 1% BSA, 0.02% Proclin300 and 50% Glycerol. Shipped at 4°C. Store at -20°C for one year. Avoid repeated freeze/thaw cycles.		
Background: On ligand binding, forms a receptor complex consisting of two type II and two type I transmembrane serine/threonine kinases. Type II receptors phosphorylate and activate type I receptors which autophosphorylate, then bind and activate SMAD transcriptional regulators. Receptor for TGF-beta. May bind activin as well.		

— VALIDATION IMAGES —

Sample: Cerebrum (Mouse) Lysate at 40 ug Liver
(Mouse) Lysate at 40 ug Primary: Anti-ACVRL1
(bs-21783R) at 1/1000 dilution Secondary:
IRDye800CW Goat Anti-Rabbit IgG at 1/20000
dilution Predicted band size: 53 kD Observed
band size: 53 kD