
KLF10 Rabbit pAb

Catalog Number: bs-21776R

Target Protein: KLF10

Concentration: 1mg/ml

Form: Liquid

Host: Rabbit

Clonality: Polyclonal

Isotype: IgG

Applications: WB (1:500-2000)

Reactivity: Mouse (predicted:Human, Rat, Rabbit, Pig, Cow, Chicken, Dog, Horse)

Predicted MW: 53 kDa

Entrez Gene: 7071

Swiss Prot: Q13118

Source: KLH conjugated synthetic peptide derived from human KLF10 : hu, mo, rat, chk, pig, cow, dog, hrs, Rb.

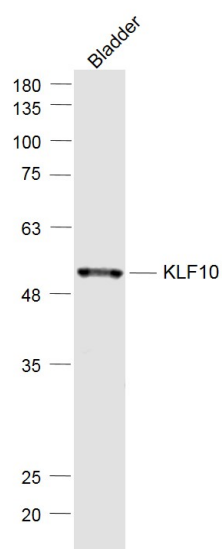
Purification: affinity purified by Protein A

Storage: 0.01M TBS (pH7.4) with 1% BSA, 0.02% Proclin300 and 50% Glycerol.

Shipped at 4°C. Store at -20°C for one year. Avoid repeated freeze/thaw cycles.

Background: KLF10 is a transcription factor that plays a role in the regulation of cell growth. It binds to the consensus sequence 5'-GGTGTG-3'. KLF10 plays a role in the response to TGFbeta (through the TGFbeta/Smad signalling pathway) and estrogen. In both cases, KLF10 induces or repressed gene transcription to enhance the TGFbeta/Smad signalling pathway, as well as other pathways, to regulate cell proliferation, differentiation and apoptosis. KLF10 has been shown to have a role in skeletal disease (osteopenia/osteoporosis), hypertrophic cardiomyopathy, and breast and prostate cancer.

VALIDATION IMAGES



Sample: Bladder (Mouse) Lysate at 40 ug Primary: Anti-KLF10 (bs-21776R) at 1/1000 dilution Secondary: IRDye800CW Goat Anti-Rabbit IgG at 1/20000 dilution Predicted band size: 53 kD Observed band size: 53 kD