

---

## RSPH4A Rabbit pAb

Catalog Number: bs-11472R

Target Protein: RSPH4A

Concentration: 1mg/ml

Form: Liquid

Host: Rabbit

Clonality: Polyclonal

Isotype: IgG

Applications: **WB** (1:500-2000)

Reactivity: Human, Mouse (predicted: Rat, Pig, Sheep, Cow, Chicken, Dog, Horse)

Predicted MW: 81 kDa

Subcellular: Cytoplasm

Locations:

Entrez Gene: 345895

Swiss Prot: Q5TD94

Source: KLH conjugated synthetic peptide derived from human RSPH4A/RSHL3: 435-482/716.

Purification: affinity purified by Protein A

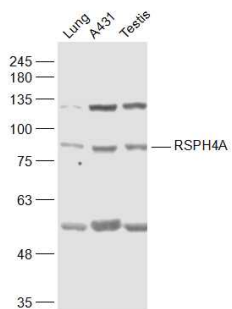
Storage: 0.01M TBS (pH7.4) with 1% BSA, 0.02% Proclin300 and 50% Glycerol.

Shipped at 4°C. Store at -20°C for one year. Avoid repeated freeze/thaw cycles.

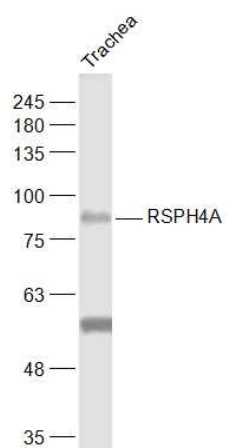
**Background:** RSHL3 is predicted to be a component of the radial spoke head based on homology with proteins in the biflagellate alga *Chlamydomonas reinhardtii* and other ciliates. RSHL3 (radial spoke head-like protein 3), also known as radial spoke head protein 4 homolog A, is a 716 amino acid protein that belongs to the flagellar radial spoke RSP4/6 family. Mutations in the RSHL3 gene cause primary ciliary dyskinesia 1, a disease arising from dysmotility of motile cilia and sperm. Existing as three alternatively spliced isoforms, the RSHL3 gene contains 6 exons, is conserved in chimpanzee, dog, cow, mouse, rat, chicken, zebrafish, fruit fly and *P.falciparum*, and maps to human chromosome 6q22.1.

### VALIDATION IMAGES

---



Sample: Lung (Mouse) Lysate at 40 ug A431 (Human) Cell Lysate at 30 ug Testis (Mouse) Lysate at 40 ug  
 Primary: Anti-RSPH4A (bs-11472R) at 1/1000 dilution Secondary: IRDye800CW Goat Anti-Rabbit IgG at 1/20000 dilution Predicted band size: 81 kD Observed band size: 81 kD



Sample: Trachea (Mouse) Lysate at 40 ug Primary: Anti-RSPH4A (bs-11472R) at 1/1000 dilution Secondary: IRDye800CW Goat Anti-Rabbit IgG at 1/20000 dilution Predicted band size: 81 kD Observed band size: 81 kD