
PEPD Rabbit pAb

Catalog Number: bs-12616R

Target Protein: PEPD

Concentration: 1mg/ml

Form: Liquid

Host: Rabbit

Clonality: Polyclonal

Isotype: IgG

Applications: WB (1:500-2000)

Reactivity: Human (predicted:Mouse, Rat, Pig, Zebrafish, Chicken, Dog, Horse)

Predicted MW: 55 kDa

Subcellular: Extracellular matrix ,Nucleus

Locations:

Entrez Gene: 5184

Swiss Prot: P12955

Source: KLH conjugated synthetic peptide derived from human PEPD: 321-420/493.

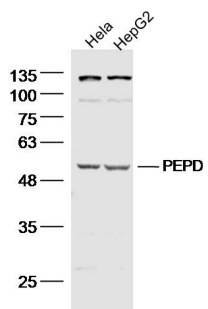
Purification: affinity purified by Protein A

Storage: 0.01M TBS (pH7.4) with 1% BSA, 0.02% Proclin300 and 50% Glycerol.

Shipped at 4°C. Store at -20°C for one year. Avoid repeated freeze/thaw cycles.

Background: This gene encodes a member of the peptidase family. The protein forms a homodimer that hydrolyzes dipeptides or tripeptides with C-terminal proline or hydroxyproline residues. The enzyme serves an important role in the recycling of proline, and may be rate limiting for the production of collagen. Mutations in this gene result in proline deficiency, which is characterized by the excretion of large amount of di- and tri-peptides containing proline. Multiple transcript variants encoding different isoforms have been found for this gene.[provided by RefSeq, Oct 2009]

VALIDATION IMAGES



Sample: HeLa (humnsn) Cell Lysate at 40 ug HepG2 (human) Cell Lysate at 40 ug Primary: Anti-PEPD (bs-12616R) at 1/300 dilution Secondary: IRDye800CW Goat Anti-Rabbit IgG at 1/20000 dilution Predicted band size: 55 kD Observed band size: 55 kD