

**bs-22881R****[ Primary Antibody ]****SA2 Rabbit pAb****Bioss**  
**ANTIBODIES**

www.bioss.com.cn

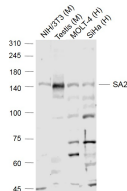
sales@bioss.com.cn

techsupport@bioss.com.cn

400-901-9800

**— DATASHEET —**

|  |   |   |
|--|---|---|
| <b>Host:</b> Rabbit<br><b>Clonality:</b> Polyclonal<br><b>GeneID:</b> 10735<br><b>Target:</b> SA2<br><b>Immunogen:</b> KLH conjugated synthetic peptide derived from human SA2: 1021-1120/1231.<br><b>Purification:</b> affinity purified by Protein A<br><b>Concentration:</b> 1mg/ml<br><b>Storage:</b> 0.01M TBS (pH7.4) with 1% BSA, 0.02% Proclin300 and 50% Glycerol.<br>Shipped at 4°C. Store at -20°C for one year. Avoid repeated freeze/thaw cycles.<br><b>Background:</b> Component of cohesin complex, a complex required for the cohesion of sister chromatids after DNA replication. The cohesin complex apparently forms a large proteinaceous ring within which sister chromatids can be trapped. At anaphase, the complex is cleaved and dissociates from chromatin, allowing sister chromatids to segregate. The cohesin complex may also play a role in spindle pole assembly during mitosis. | <b>Isotype:</b> IgG<br><b>SWISS:</b> Q8N3U4 | <b>Applications:</b> WB (1:500-2000)<br><b>Reactivity:</b> Human, Mouse<br>(predicted: Rat, Rabbit, Pig, Sheep, Cow, Dog, Horse)<br><b>Predicted MW.:</b> 141 kDa<br><b>Subcellular Location:</b> Nucleus |
|--|---|---|

**— VALIDATION IMAGES —**

Sample: Lane 1: NIH/3T3(Mouse) Cell Lysate at 30 ug Lane 2: Testis (Mouse) Lysate at 40 ug Lane 3: MOLT-4 (Human) Cell Lysate at 30 ug Lane 4: SiHa (Human) Cell Lysate at 30 ug Primary: Anti-SA2 (bs-22881R) at 1/1000 dilution Secondary: IRDye800CW Goat Anti-Rabbit IgG at 1/20000 dilution Predicted band size: 145 kD Observed band size: 145 kD